

Feedback from the 8th GFRAS Annual Meeting

SFRAS Meeting 26.10.2017



Natalie Ernst, GFRAS



General information:

- 9-13 October 2017
- Co-organised by and overlapping with the Australasian-Pacific Extension Network APEN (held 12-15 October)
- In Ingham, Townsville

Structure:

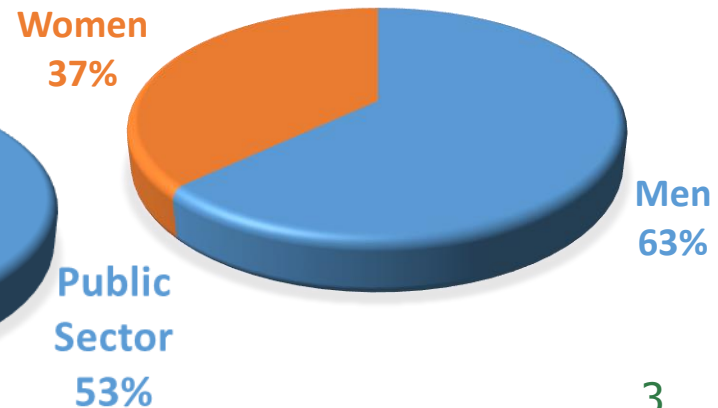
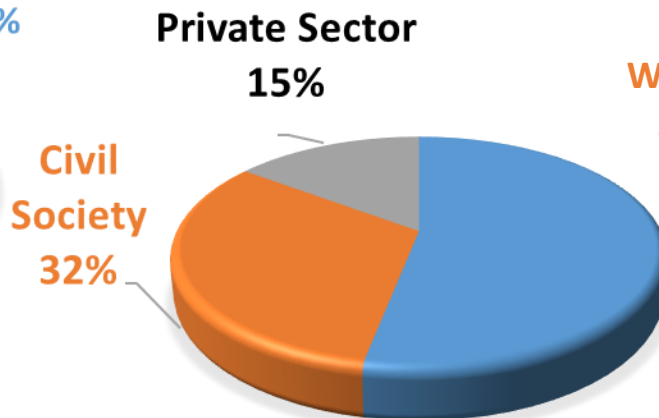
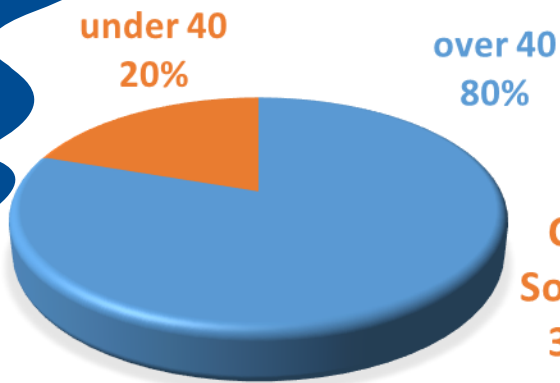
- Thematic component
- Functional component
- Field Trip
- Policy Dialogue



RURAL ADVISORY SERVICES AND EMPOWERED YOUTH FOR BALANCED TRANSFORMATION OF RURAL AND URBAN COMMUNITIES

Participants

- 81 to over 300 participants
- 15 networks
- 32 countries



Some statistics

FAO/CTA/IFAD, 2014:

Global youth population - 1.3 billion in 2050

Majority in developing countries in Africa, Asia

Estimated 55% in rural areas

Conditions of un-/underemployment and poverty

ILO, 2010:

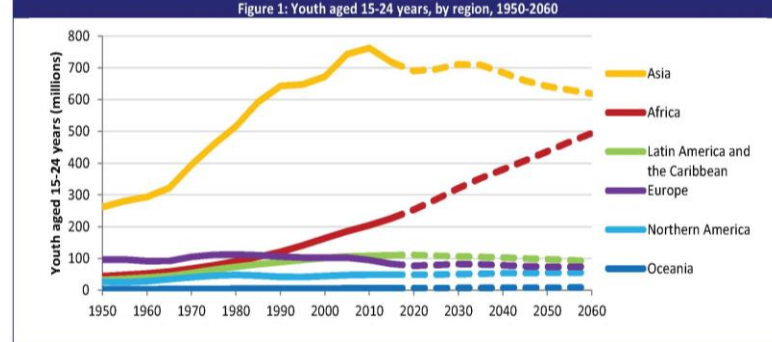
300M young people earn less than \$2/day

unemployed are mainly better-educated urban youth

Youth demographics in rural-urban areas:

Data not segregated for rural vs urban

Varying definitions of 'employment'

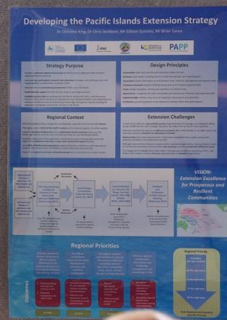


Background challenges

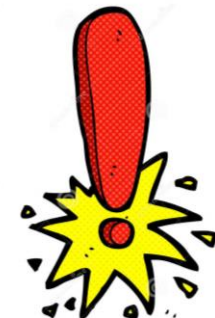


- **Youth are our future feeders** → SDGs
- **Lack of access** of land, finances, employment, education, training, recognition, opportunities, etc.
- For youth, the **agricultural sector is not attractive**
- **Youth are not equal youth**
- Politics, policies, projects and programmes are often **driven by bias** and not by evidence
- **Underinvestment in extension and knowledge sharing** in many parts of the world
- **Disconnection** between the training imparted by RAS and the training needed by youth

How to address these challenges??



Agriculture is not just farming



- **All disciplines** can be found in the ag sector
- **PERFECT** opportunities in: **P**olicies, **E**ducation, **R**esearch, **F**arming and **F**inances, **E**xtension and **R**AS, **C**ommunications and **T**echnology/Trade
- Look at the whole **value chain** and work with youth as **drivers of change**: Work with creativity, skills, knowledge, and flexibility of youth → incentives for youth
- Context-specific entrepreneurship models

Holistic and context-specific perspective

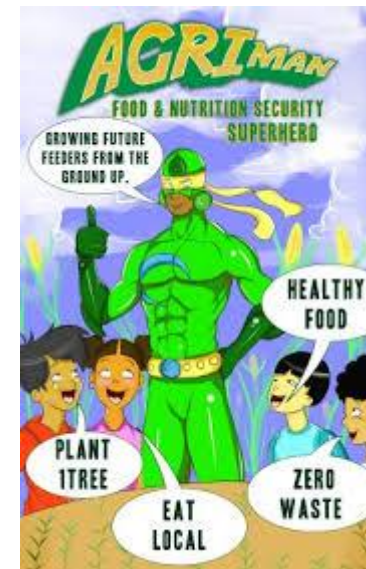


Youth need support from and are involved in other community processes:

Addressing youth is addressing

- gender
- age and intergenerational processes
- community values and habits
- family processes

→ Start early!



Youth reach youth!



- RAS must use **right language** when talking to youth
- Comprehensive **inclusion of youth in RAS**
- **Role of ICTs**
- **Career opportunities** in RAS?



Conducive environment is pre-condition



- Include youth in all policy making processes
- Mentorship programmes for youth to be effective in policy-making
- Policies need to be more evidence-based
- Monitoring of policies
- Policy awareness through technologies and ICT: Role of youth
- Political will???

... BUT: Capacities of RAS... ??



Professionalisation RAS needed to:

- create career opportunities for youth
- improved capacities and competencies to react to challenges
- take up value chain approaches
- understand youth and talk in same language

→ A new role of RAS: **Facilitator of service provision**

Conclusion: *AgriCOOLture*

- Make agriculture cool again
- Youth are not equal youth
- Agriculture is not framing only
- Address bias and use evidence
- New role for RAS



Need to work **WITH** youth, not **FOR** youth

Are we ready...????



Outputs

- GFRAS Working Group on Youth
- GFRAS Issue Paper on Youth
- Future representation of youth in Steering Committee...?

Contact

Global Forum for Rural Advisory Services

c/o Agridea

Jordils 1

1001 Lausanne

Switzerland

Tel. 0041-(0)52 354 97 64

info@g-fras.org

www.g-fras.org

