



Shareweb

Disaster Risk Reduction

DRR NETWORK

Survey results 2020



SDC DRR NETWORK SURVEY

Aim: Make the SDC DRR Network more relevant to its members



Network Planning

The Network is integrating members' preferences into its planning.



Respondents

A total of 71 respondents have answered the comprehensive Network survey in December 2020. 85% are Network members, representing 22% of the Network membership.



Contributions

Concrete ideas on how the members could actively contribute to the Network are shared.



Vision

Respondents present their views on topics, services, tools and products the Network should focus on.



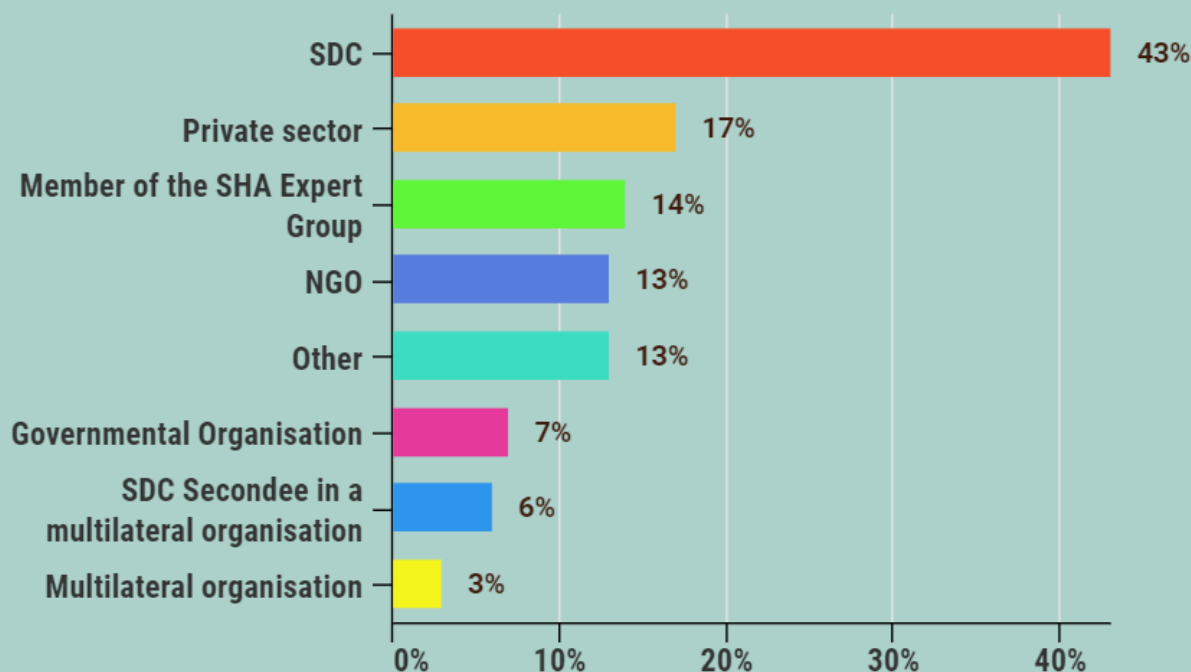
SURVEY RESPONDENTS



85% are already
Network members

MEMBERS of other SDC NETWORKS

Working for



**Climate
Change &
Environment**



**Water
(Réseau)**



**Agriculture &
Food Security**

RESPONDENTS' VISION OF THE DRR NETWORK



CHALLENGES

for which

SUPPORT *from the DRR Network would be*

USEFUL

"Support on particular issues related to mainstreaming and integration of CC, ENV, DRR issues in ongoing and upcoming projects"



DRR Mainstreaming

"Know more about the specific competences of each DRR expert to be able to exchange with the right people for feedbacks when concrete problems arise."



Peer exchange & thematic support

"Get concrete examples of project implementations from countries all over the world, including lessons learned. Programs in South America should be able to learn from experiences in Asia, Africa, etc."

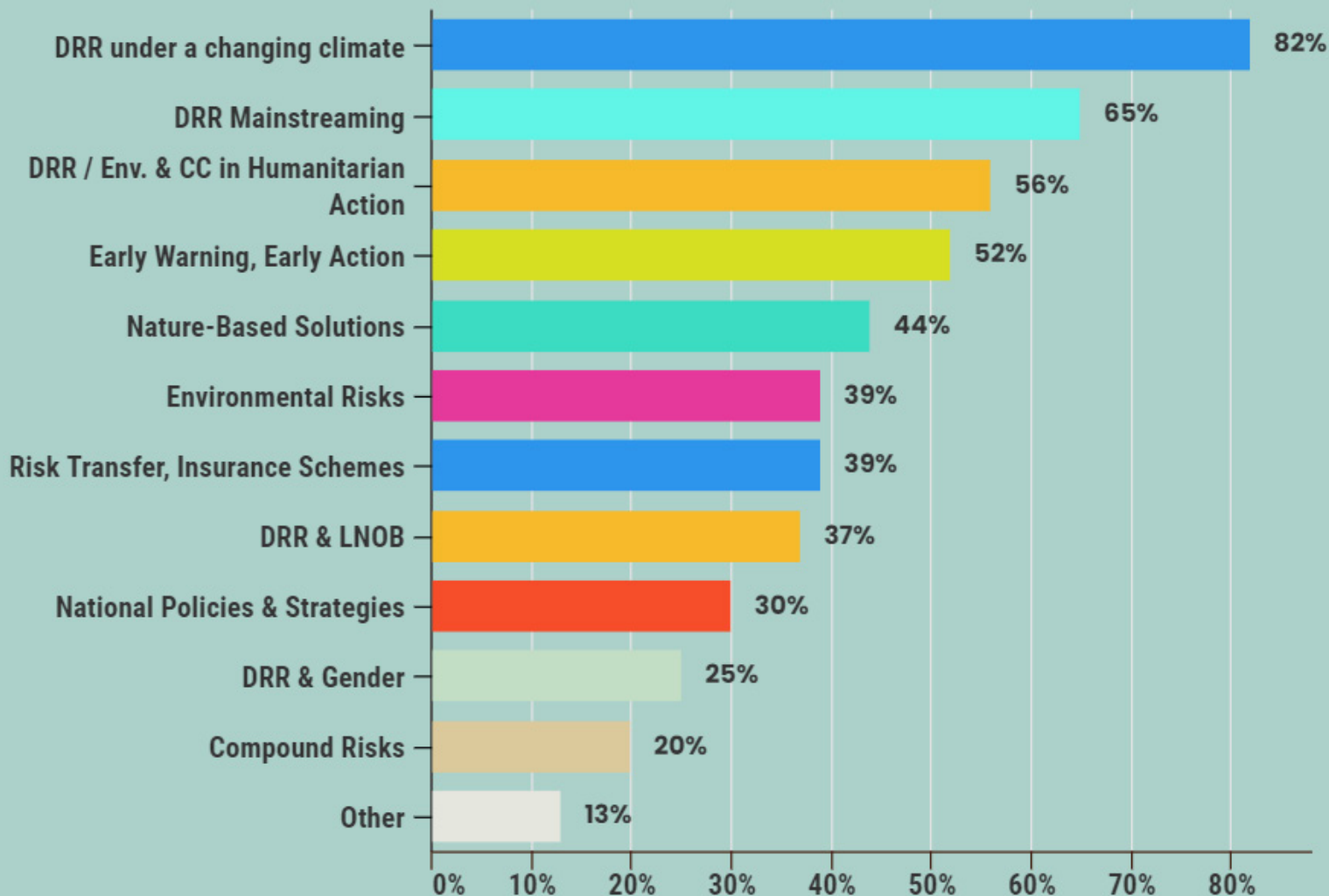


Project capitalisation & Best practices

RESPONDENTS' VISION OF THE DRR NETWORK



Priority topics (5 most important)



RESPONDENTS' VISION OF THE DRR NETWORK



Services
Tools
Products

considered as

VERY RELEVANT
RELEVANT



86%

A well-structured shareweb including information on upcoming and past events, documents



61%

A well-structured shareweb for sharing information



75%

Specific webinars on particular topics and issues



61%

Support for capitalisation of SDC project knowledge



75%

Training offers on DRR related topics



56%

Match-making for peer exchange or mentoring for project or strategy support



72%

Pool of experts able to provide advice on demand



46%

A well-structured shareweb including e-discussion, learning journeys and other interactive means



66%

A Newsletter

MEMBERS' CONTRIBUTIONS



2/3

say they'd like to actively contribute to the

DRR

Network

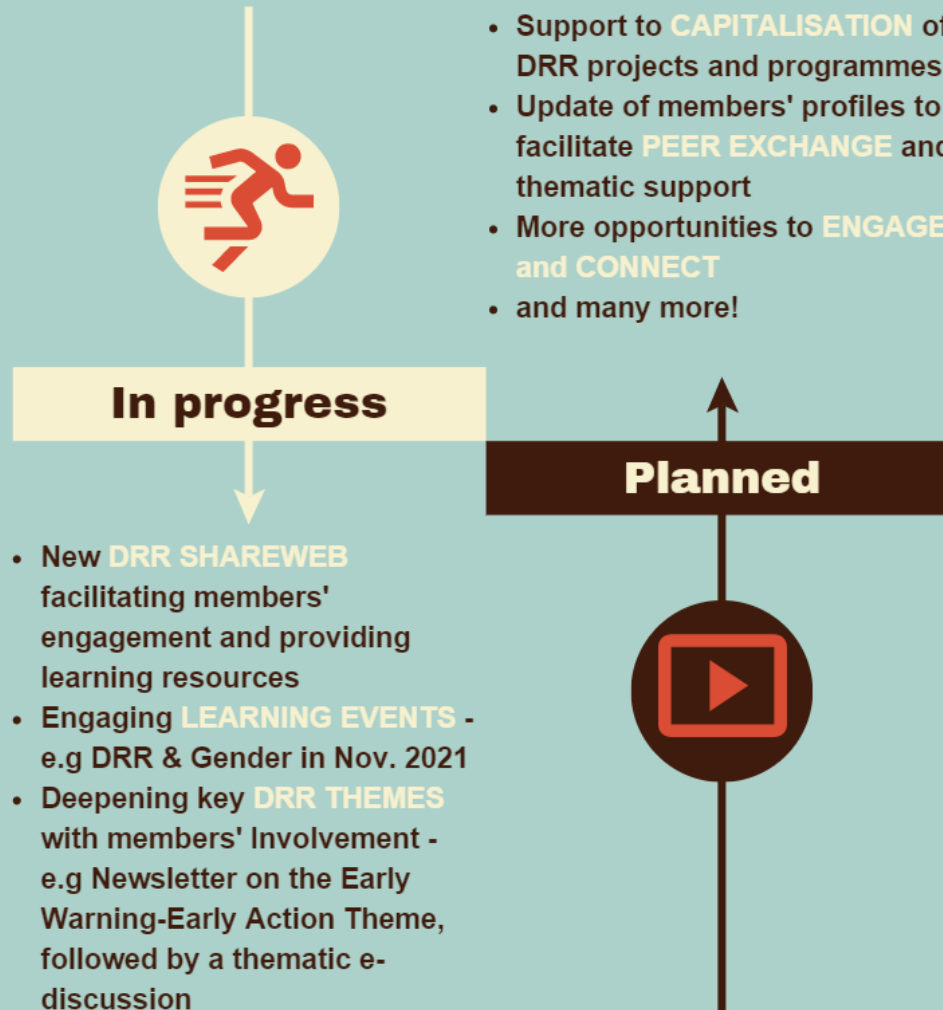
HOW WOULD THEY CONTRIBUTE?



NETWORK PLANNING



The survey results are shaping the DRR Network activities for 2021, in particular



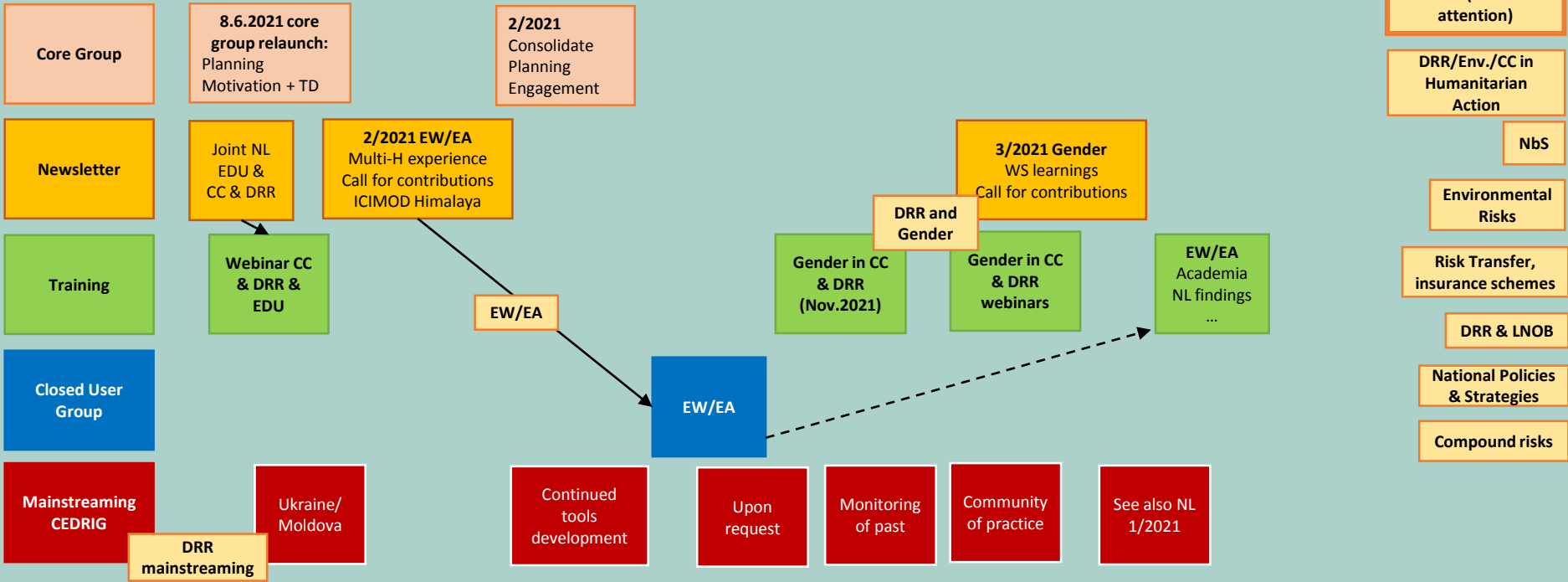
NETWORK PLANNING



Detailed network planning for 2021

2021

June	July	Aug	Sept	Oct	Nov	Dec
------	------	-----	------	-----	-----	-----



Shareweb	Profiles of members	Info on events and trainings	Host newsletter	Link to CEDRIG	Themes development	e-discussions (Closed User Group)
Themes development	Knowledge creation	Link (new) trends from academia to ongoing «themes»	Develop systemic integrated approaches	Capitalisation		

**Thank you for your
valuable inputs!**