



Results chains

Impact logic

Causal model

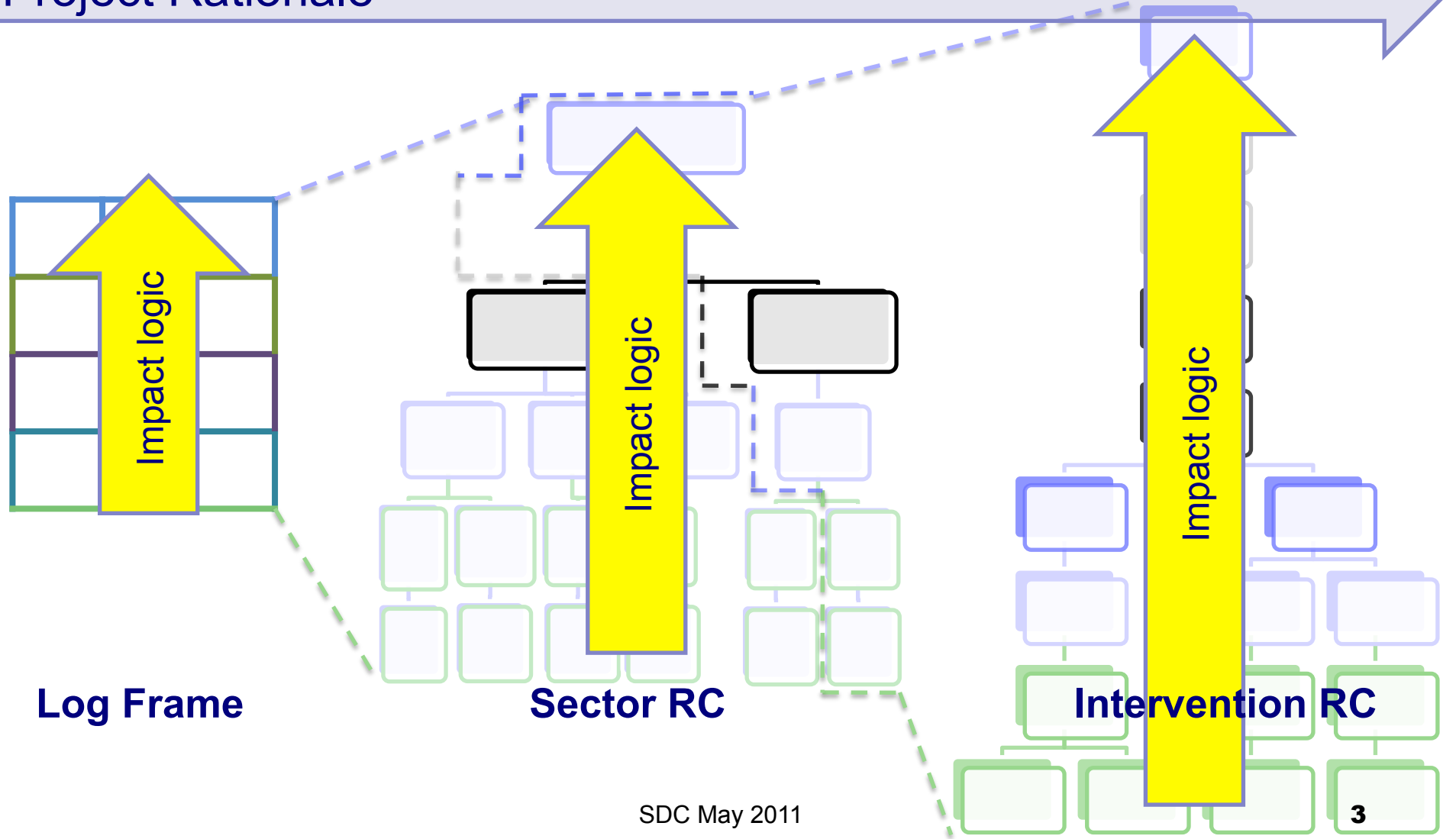
Results chains



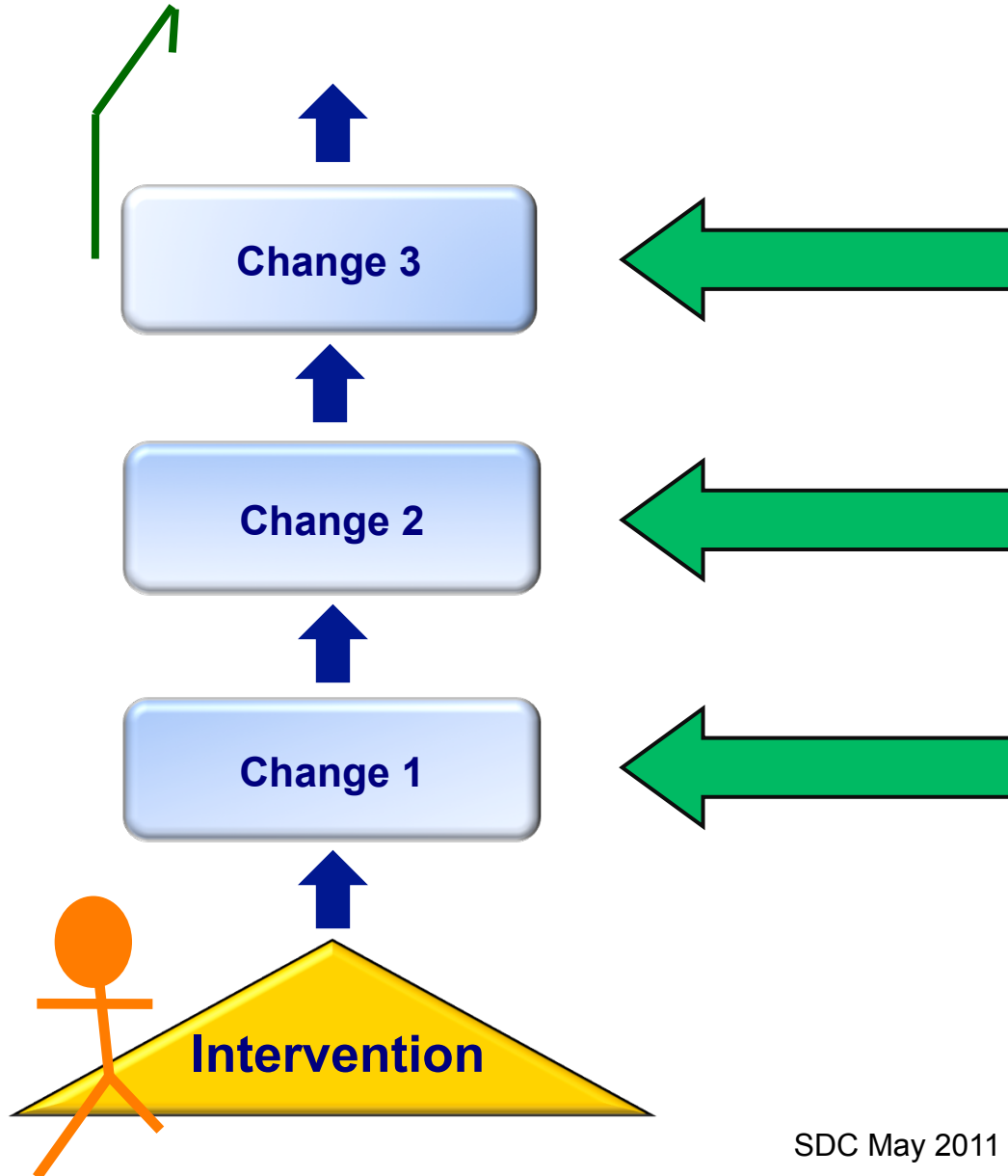
Linking our activities
with
expected changes

Results Chains and the Log Frame

Project Rationale



A tool for thinking through... and projecting

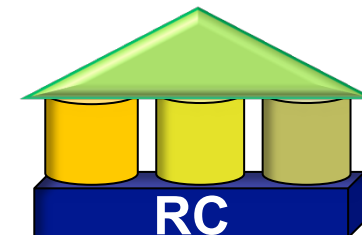


Design Questions:

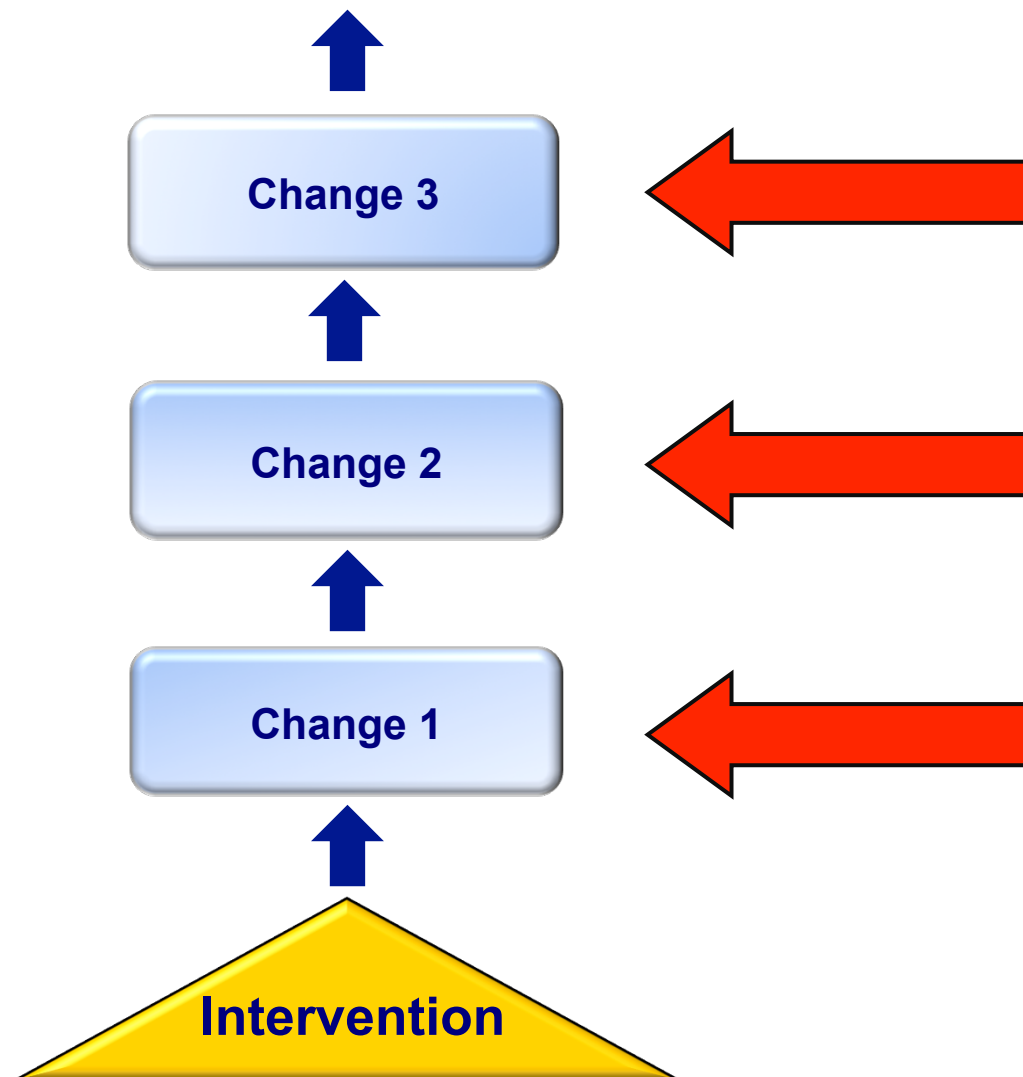
Why isn't this already happening? What needs to change for this to happen?

Why isn't this already happening? What needs to change for this to happen?

Why isn't this already happening? What needs to change for this to happen?



A tool for tracking the ball... analysis, learning

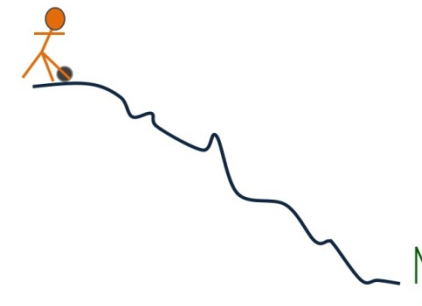


Monitoring Questions:

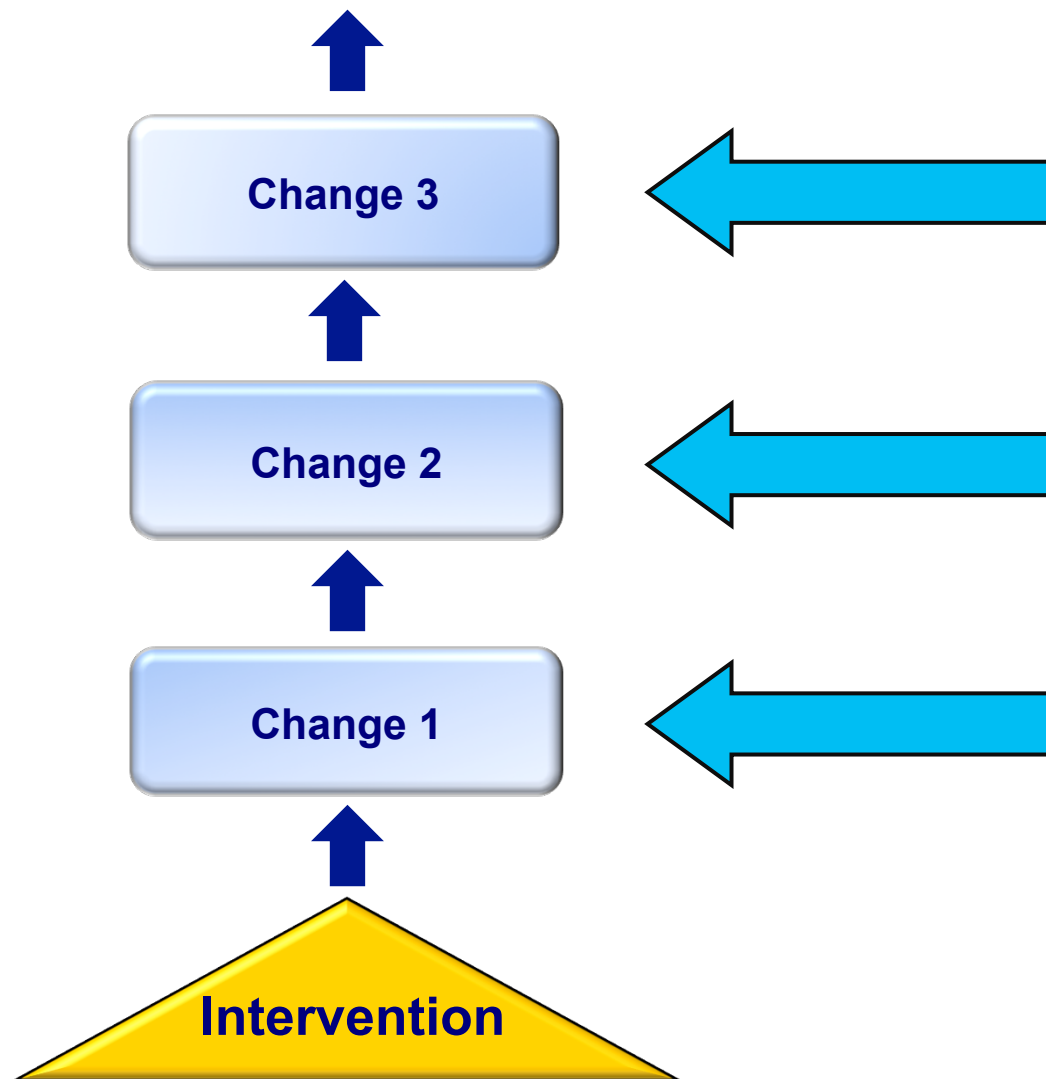
To what extent did change 3 take place? Will it last?

To what extent did change 2 take place? Will it last?

To what extent did change 1 take place? Will it last?



A tool for connecting ... attribution

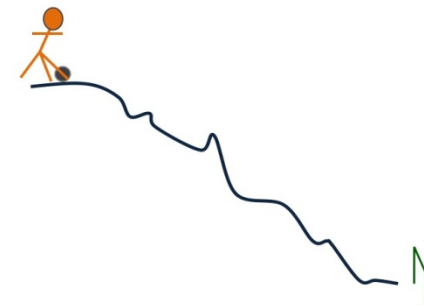


Impact Questions:

To what extent was Change 3 due to Change 2?

To what extent was Change 2 due to Change 1?

To what extent was Change 1 due to our action?



Sustainable & Efficient Impact at Scale

- Additional income
- Additional employment

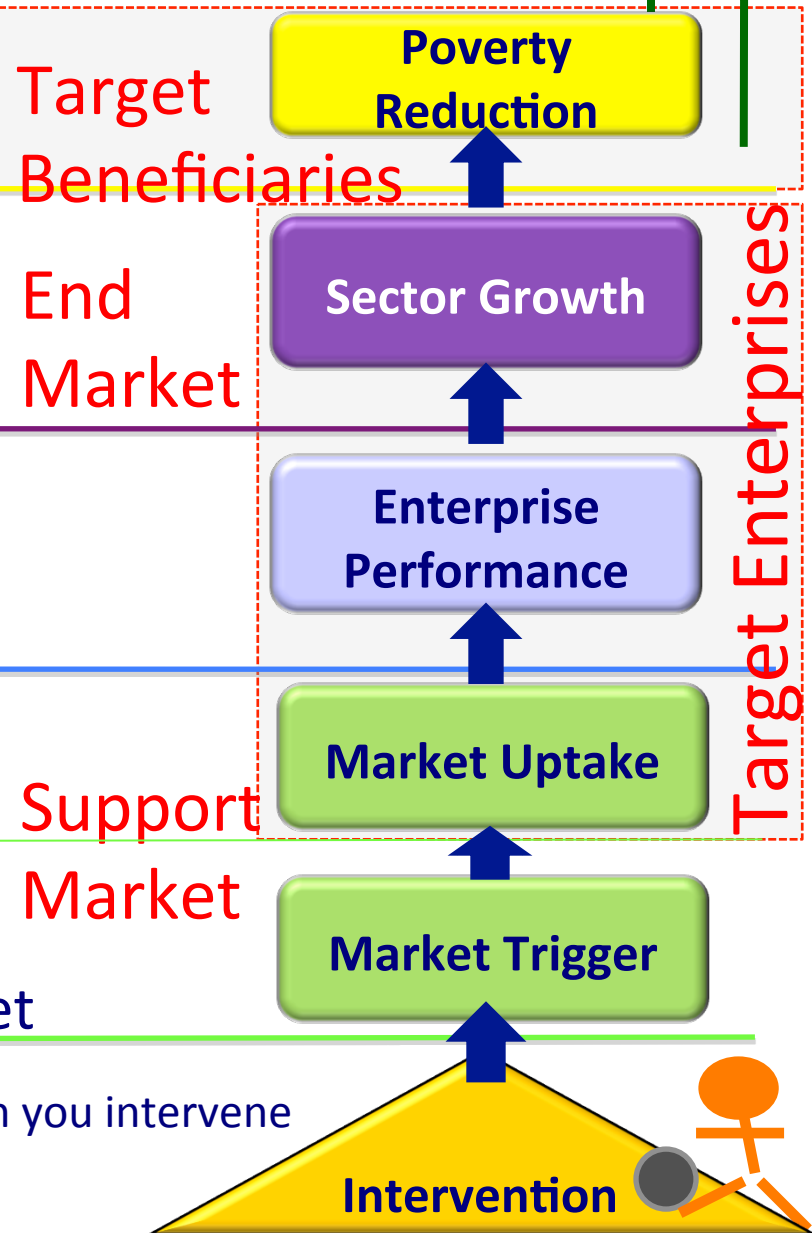
- Expansion existing enterprises
- New entrants into the sector

- Improved performance
- Products, Productivity, Profits

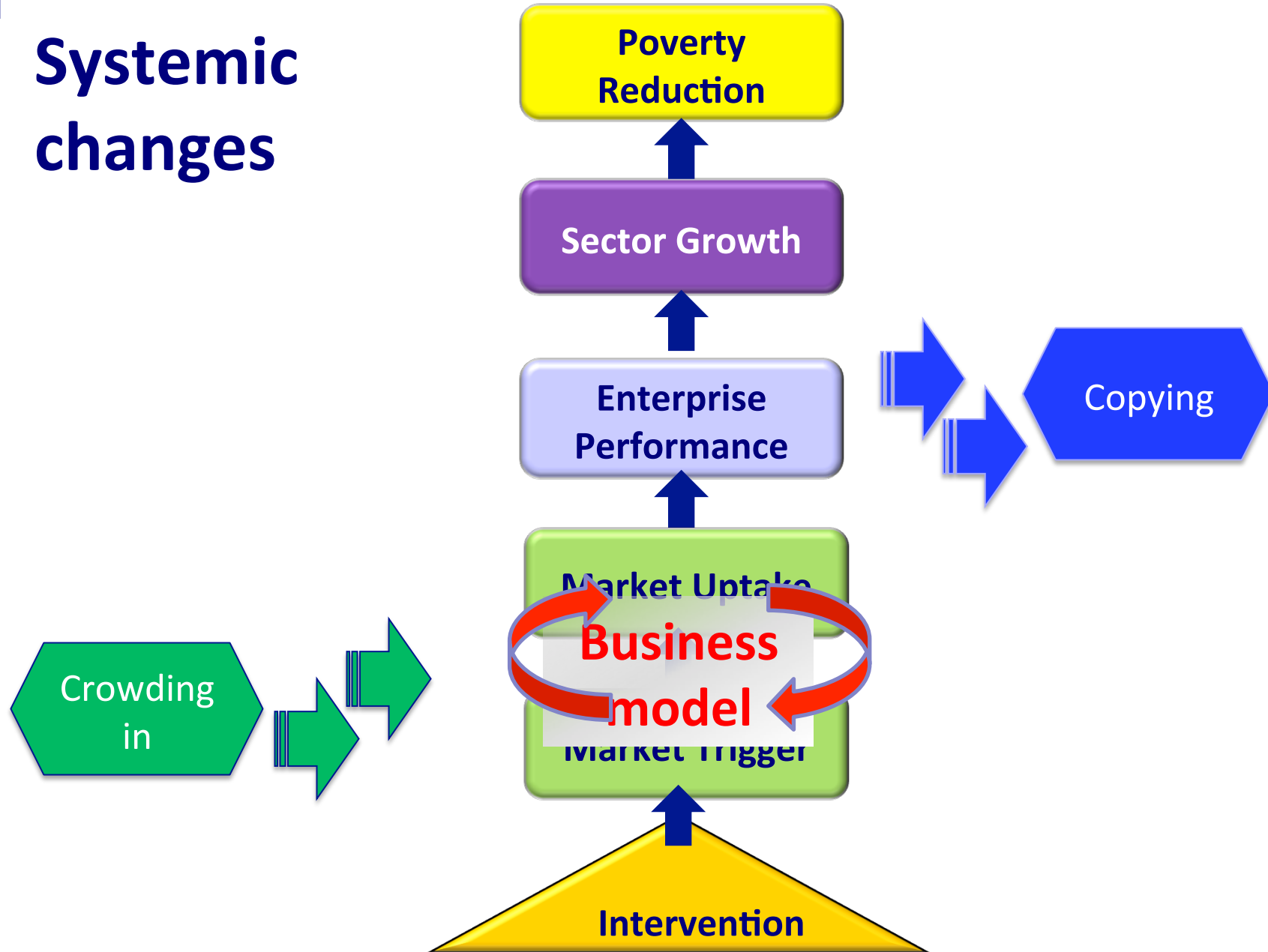
- Response to Market Trigger
- Buy, use, apply

- Output of an intervention
- that will influence the support market

- Entry point = the system actor through which you intervene
- Intervention = time bound set of activities



Systemic changes



Copying...

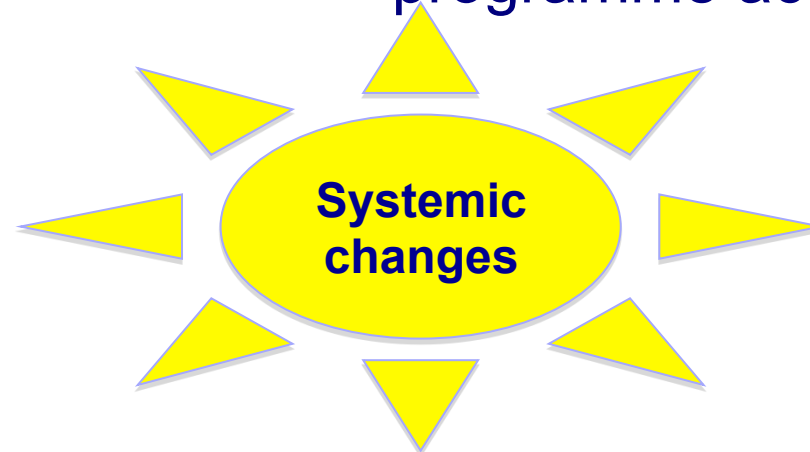


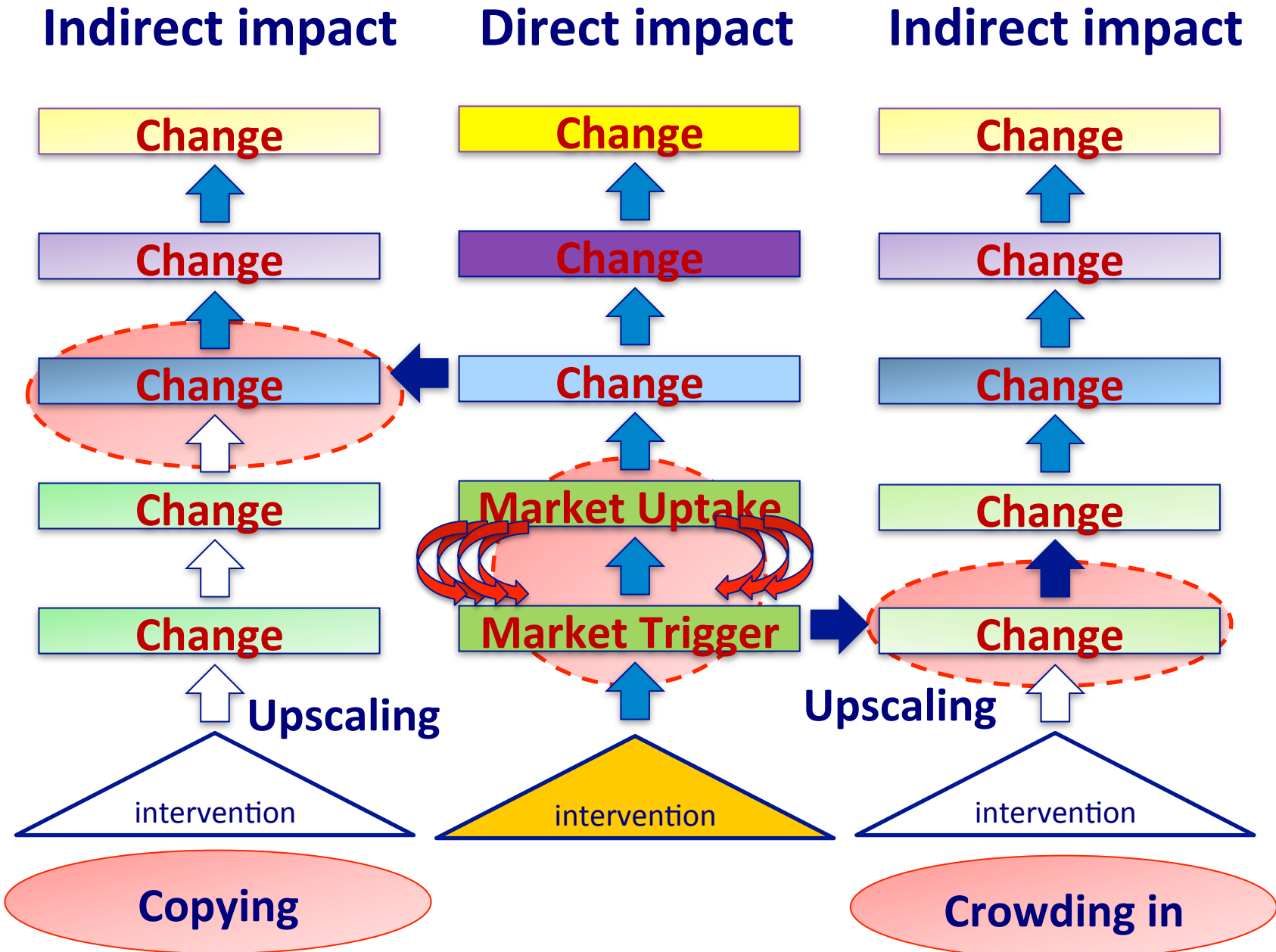
... enterprises *at the target level copying behaviours* from enterprises influenced by service providers influenced by programme activities...

Crowding in...

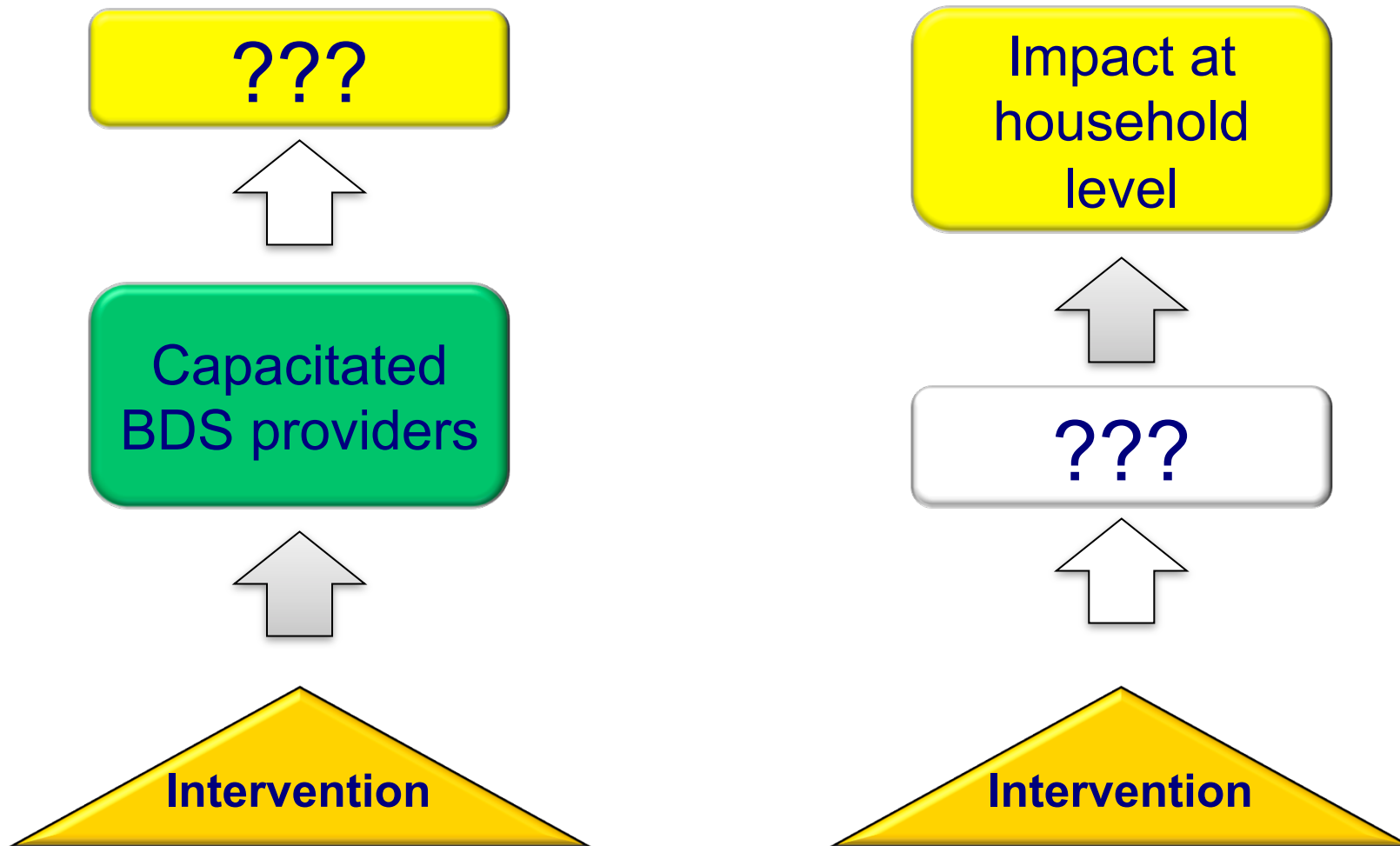


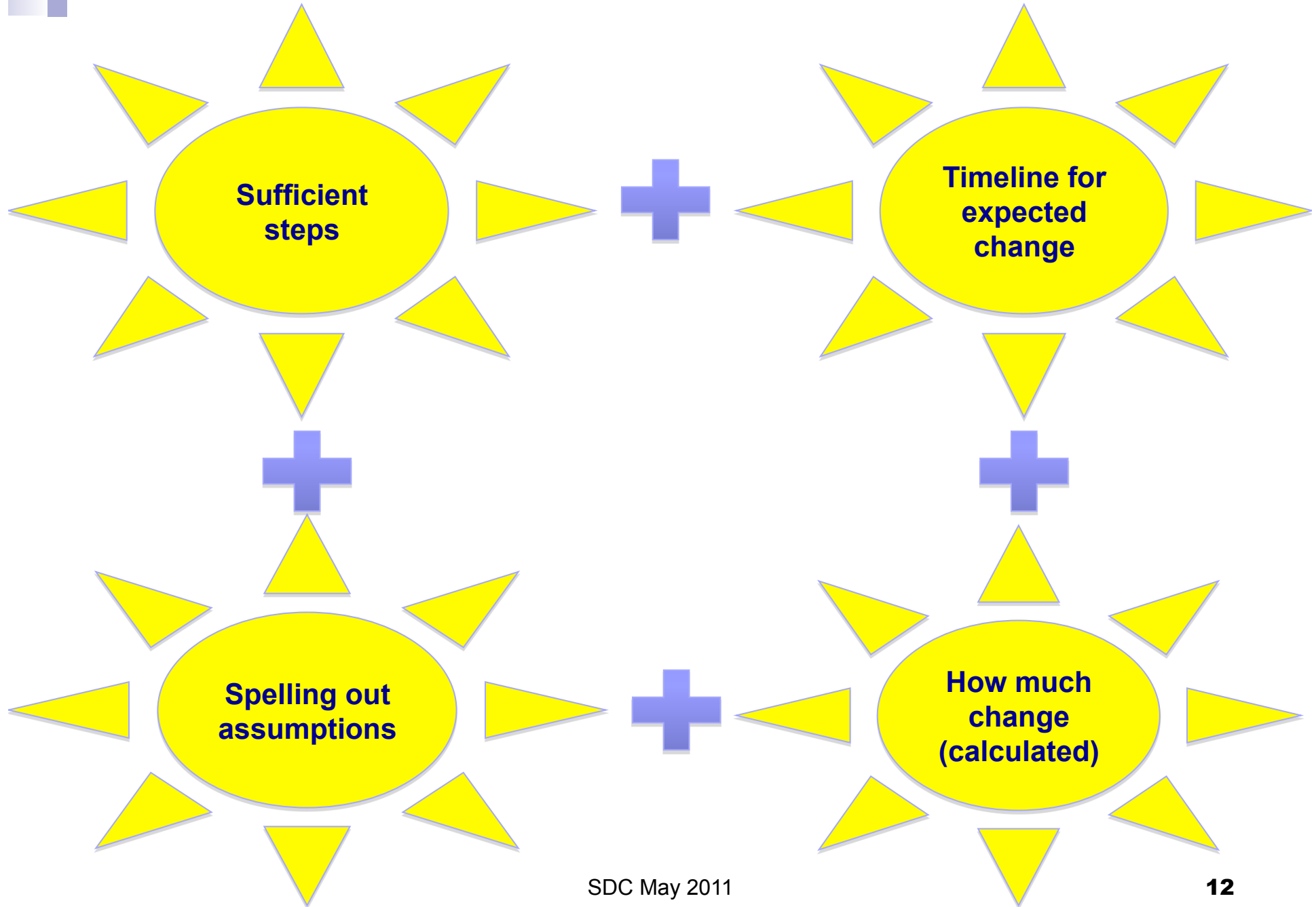
... enterprises *at levels other than the target level copying behaviours* from those influenced by programme activities or entering an (emerging) market influenced by programme activities...



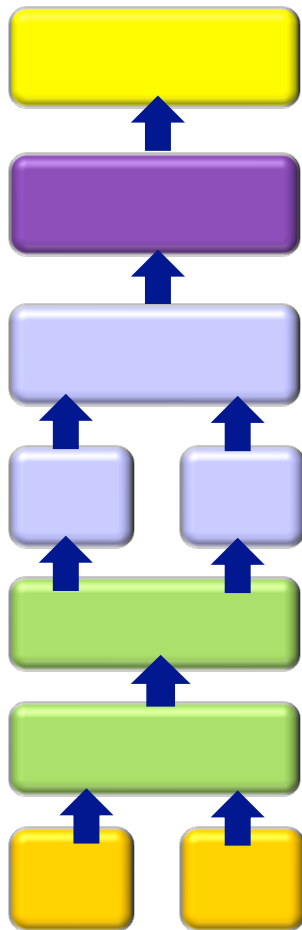


Results chains can't be incomplete... or with short cuts...!!!





Intervention Results Chains: level of detail



- Do I need a box?

- Can I afford not to know?

- How quickly do I want to find out?

- How much more difficult is it measuring later?

- Can I do without?

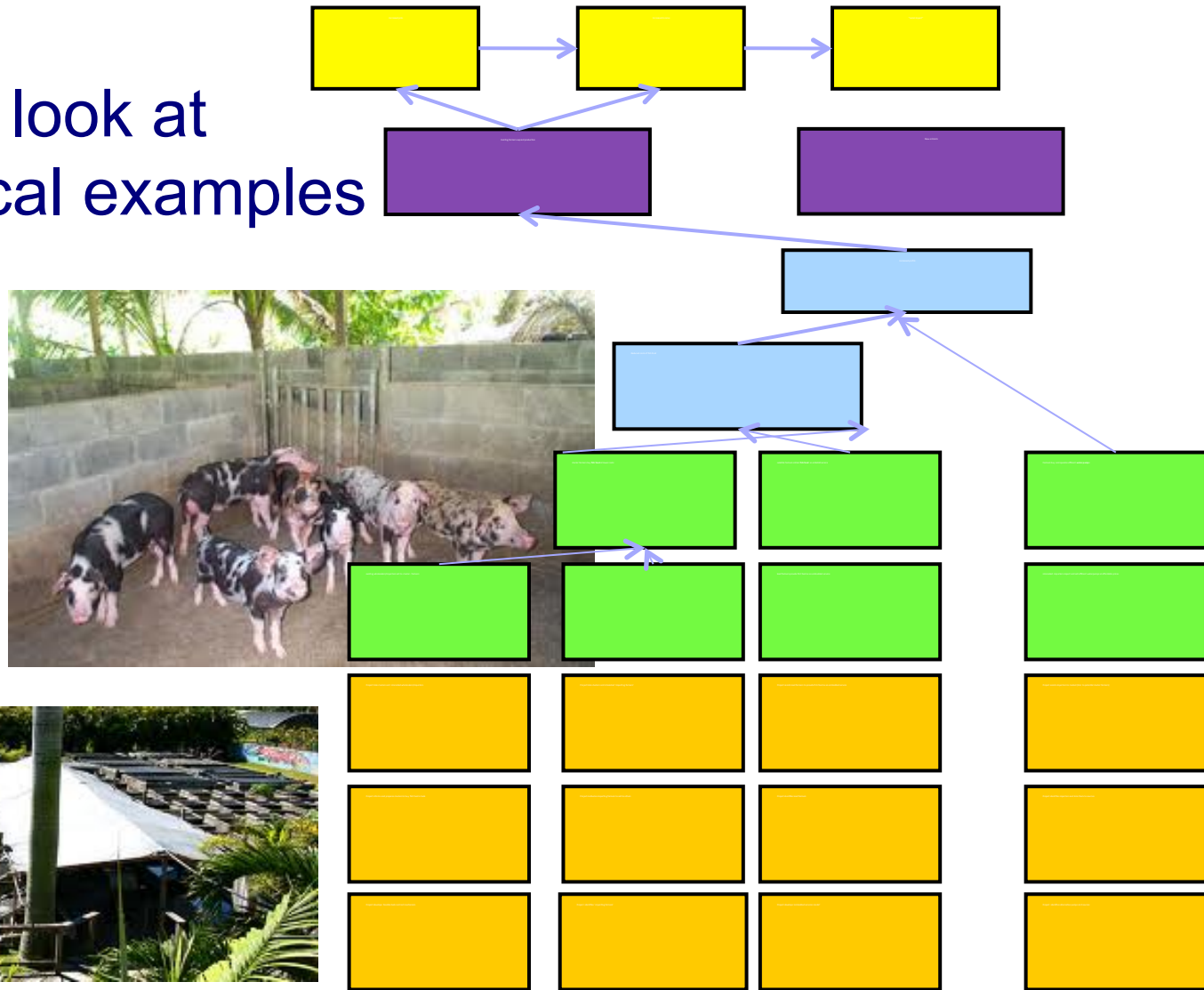
- Two boxes with the same indicator

- Does it help to show the results chain logic?

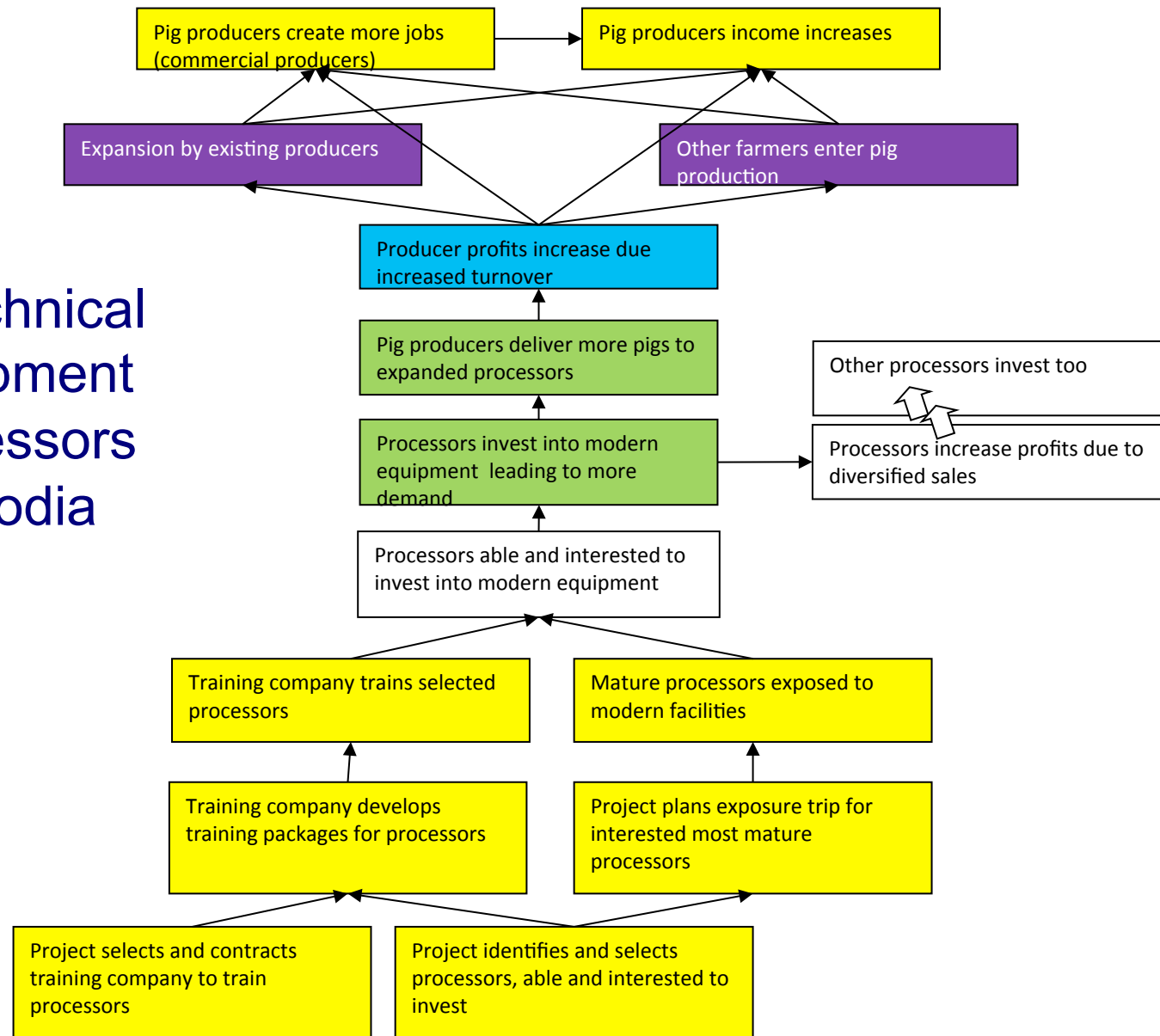
- If you don't want to forget.....



Let's have a look at some practical examples



Example: Technical Skills Development for pork processors MSME Cambodia



Example *Draft RC*
Ornamental Fish
Value Consortium
Jamaica

