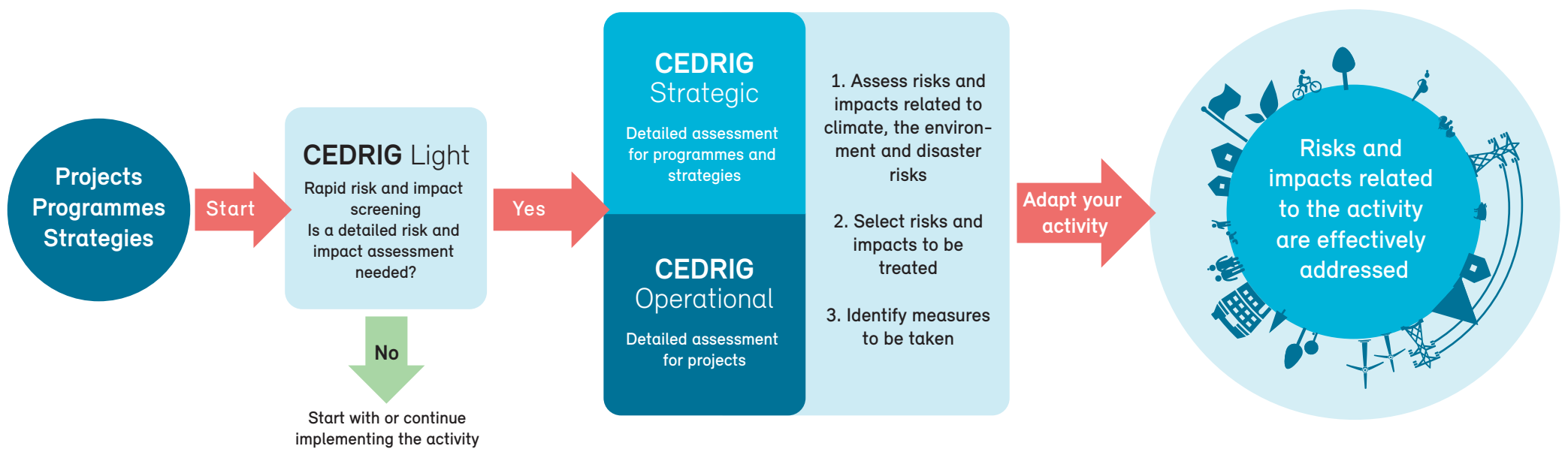


**CEDRIG** is a user-friendly risk and impact assessment tool for systematically integrating risks related to climate change, environmental degradation and natural hazards into development cooperation and humanitarian aid. CEDRIG enhances the overall resilience of systems and communities. It also helps users secure development achievements and avoid maladaptation in such key areas as agriculture, water, health, employment and income, education and migration.

Access CEDRIG @ [www.cedrig.org](http://www.cedrig.org)



### CEDRIG aims to protect development gains

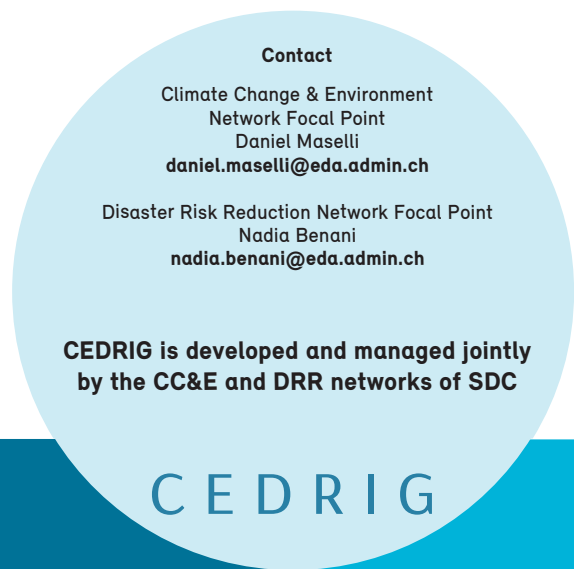
Mainstreaming climate and environmental considerations and disaster risk reduction into development cooperation and humanitarian aid is a great challenge that offers unprecedented opportunities for strengthening coping capacities, for protecting lives and assets and for improving the well-being of vulnerable communities.

### Combining risk and impact perspectives

CEDRIG helps determine whether existing and planned strategies, programmes and projects are at risk from climate change, environmental degradation or natural hazards, as well as whether these interventions could further exacerbate greenhouse gas emissions, environmental degradation or the risks of natural hazards.



Two modules – **CEDRIG Strategic** (for strategies and programmes) and **CEDRIG Operational** (for projects) – allow for more detailed assessments of risks and impacts and the identification of concrete measures. They can be conducted in the form of a participatory workshop in the field with all relevant stakeholders. The duration can vary from 1 to 3 days depending upon the scope of field visits. Preparation for the workshop entails conducting an in-depth context analysis on climate change, the environment, disaster risks and economic and political factors.



**CEDRIG Light** serves as an initial filter to determine whether an activity is at risk from climate change, environmental degradation or natural hazards or could have significant negative impacts on greenhouse gas emissions, the environment or natural hazards. The results are used to decide if a detailed assessment should be conducted. CEDRIG Light takes approximately one hour and can be conducted by one person alone.

**Better results**

- Take a dual perspective** and assess both risks and possible negative impacts
- Break the silos** and integrate climate, the environment and natural hazards
- Involve relevant stakeholders** and stimulate a dynamic joint effort to reach a better understanding
- Identify concrete measures** and improve your strategy, programme or project

**Easy to use**

- Work online, or offline** and have your data easily transferred into the online version
- Create your team** and decide who should contribute and have access to each of your studies
- Store your information** and safeguard documents and pictures in various formats
- Join a community of practice** and exchange experiences and improve your skills

