

Promoting climate resilient development within SDC programs in East
and Southern Africa

8-12 September 2014, Nairobi, Kenya

Sources of climate information

Nick Brooks

nb@garama.co.uk

www.garama.co.uk



Schweizerische Eidgenossenschaft
Confédération suisse
Confederazione Svizzera
Confederaziun svizra



Garama 3C Ltd

Documentary sources

UNDP-Oxford Climate Change Country Profiles

- Climate data analysis for 52 developing countries, nationally averaged data
- Some years old now, based on old SRES climate scenarios
- <http://www.geog.ox.ac.uk/research/climate/projects/undp-cp/>

IPCC reports (<http://www.ipcc.ch>)

- Regional and sectoral chapters (WGII) and regional projections (WG1) useful
- Reference numerous individual studies that can be used in assessment

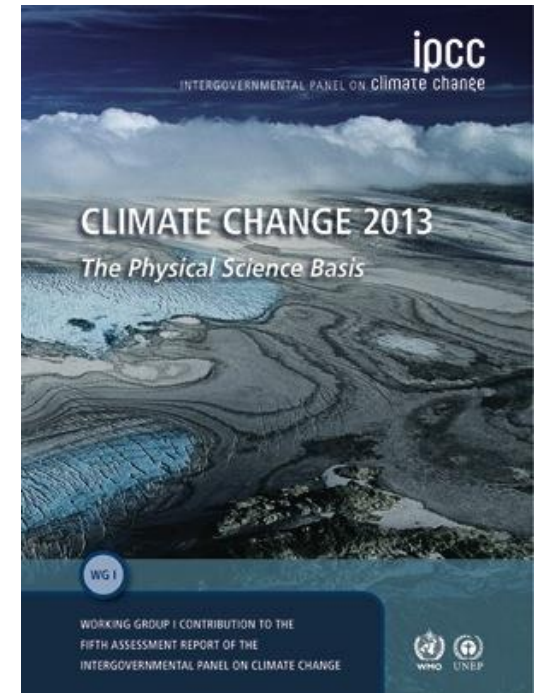
National & other country documents

- NAPAs, NAPs, National Communications (governments)
- Country profiles (development agencies)
- National & other vulnerability assessments

Academic studies & technical reports

- Research papers, peer-reviewed journals
- Technical studies for specific sectors, projects, etc

+ National met. & hydro. services, online data portals

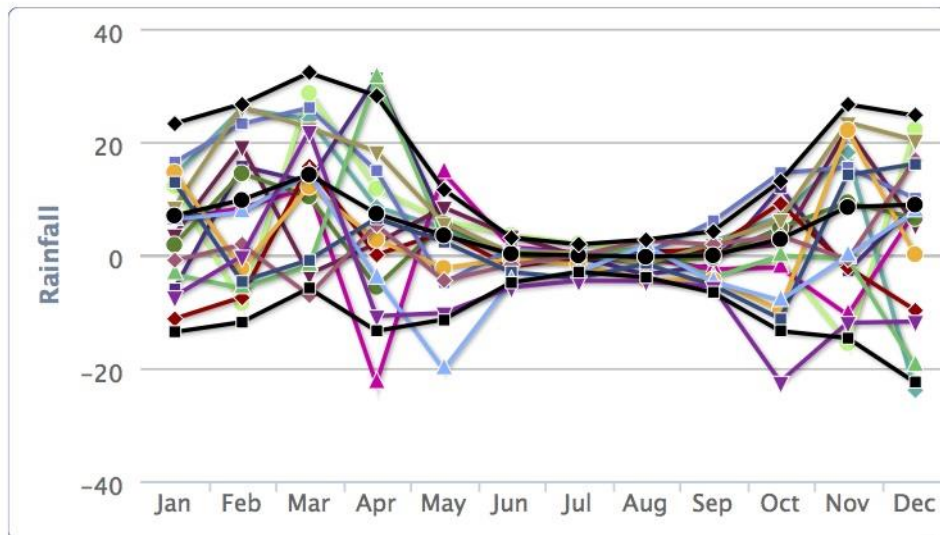


World Bank Climate Change Knowledge Portal

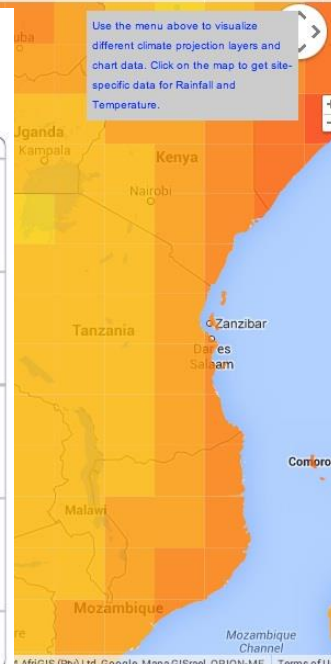
<http://sdwebx.worldbank.org/climateportal/index.cfm>

- Historical climate data & Historical Variability Tool (station data)
- Future projections - averaged and downscaled for key variables (multi-model)
- Climate Risk and Adaptation Country Profiles - hazards, baselines, vulnerabilities
- Development & climate impacts
- World Bank funded activities

PROJECTED CHANGE IN RAINFALL FOR TANZANIA FROM 2020 TO 2039.

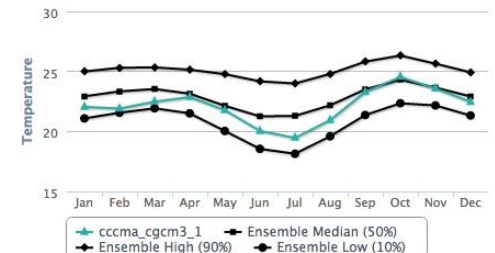


Show Legend



Show Source

MEAN PROJECTED TEMPERATURE FOR TANZANIA FROM 2020 TO 2039.



Show Source

HISTORICAL MODELED TEMPERATURE FOR TANZANIA(1980-1999)



Show Legend

Climate Information Platform

<http://cip.csag.uct.ac.za/webclient2/datasets/africa-merged-cmip5/>

- Hosted at University of Cape Town
- Global map of observed sea-level trends with data for individual stations
- Observed & projected (downscaled) climate data for Africa, by station
- Plot ranges across 10 models, with 10th & 90th percentile values & extremes
- Older version with SRES scenarios, new version with RCPs

