



Schweizerische Eidgenossenschaft  
Confédération suisse  
Confederazione Svizzera  
Confederaziun svizra  
**Embassy of Switzerland in Albania**

# **3rd SDC Regional Roma Inclusion Seminar: Transformation, Effectiveness and Sustainability**

**30 May - 2 June 2016  
Tirana, Albania**

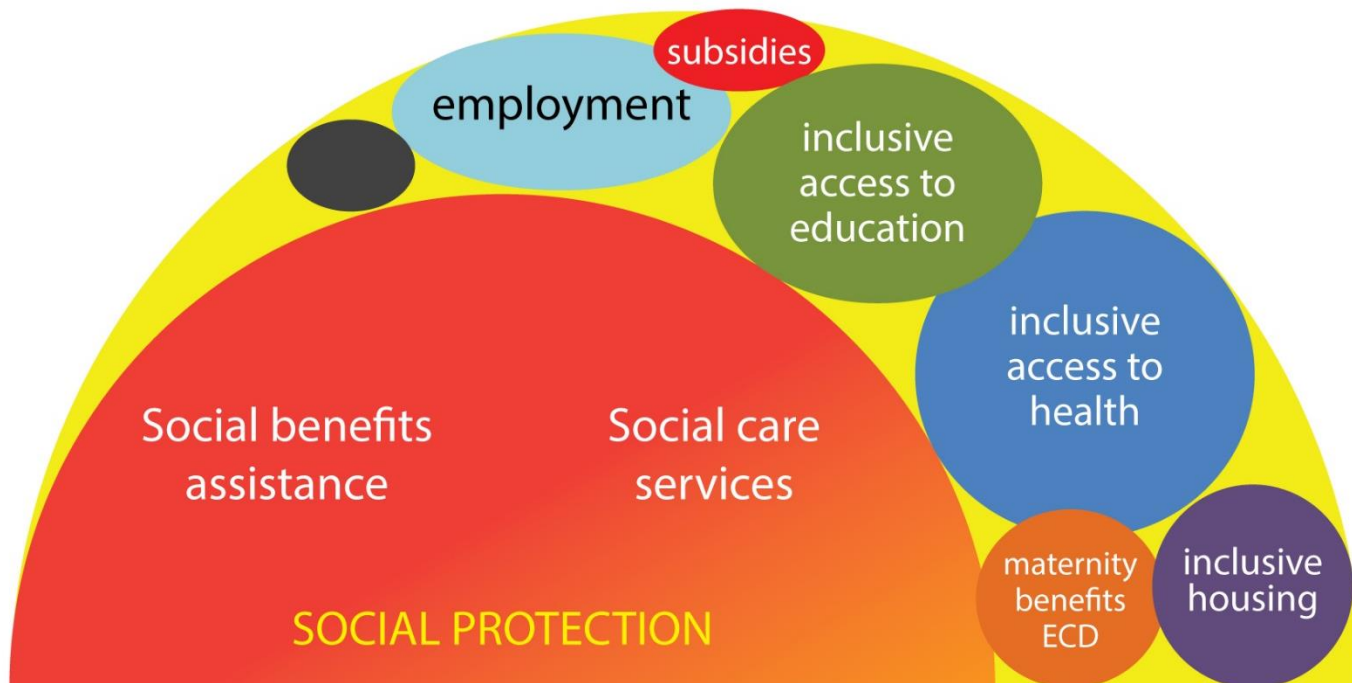
**Strategic outlook of the social inclusion portfolio in  
Albania**





# BACKGROUND

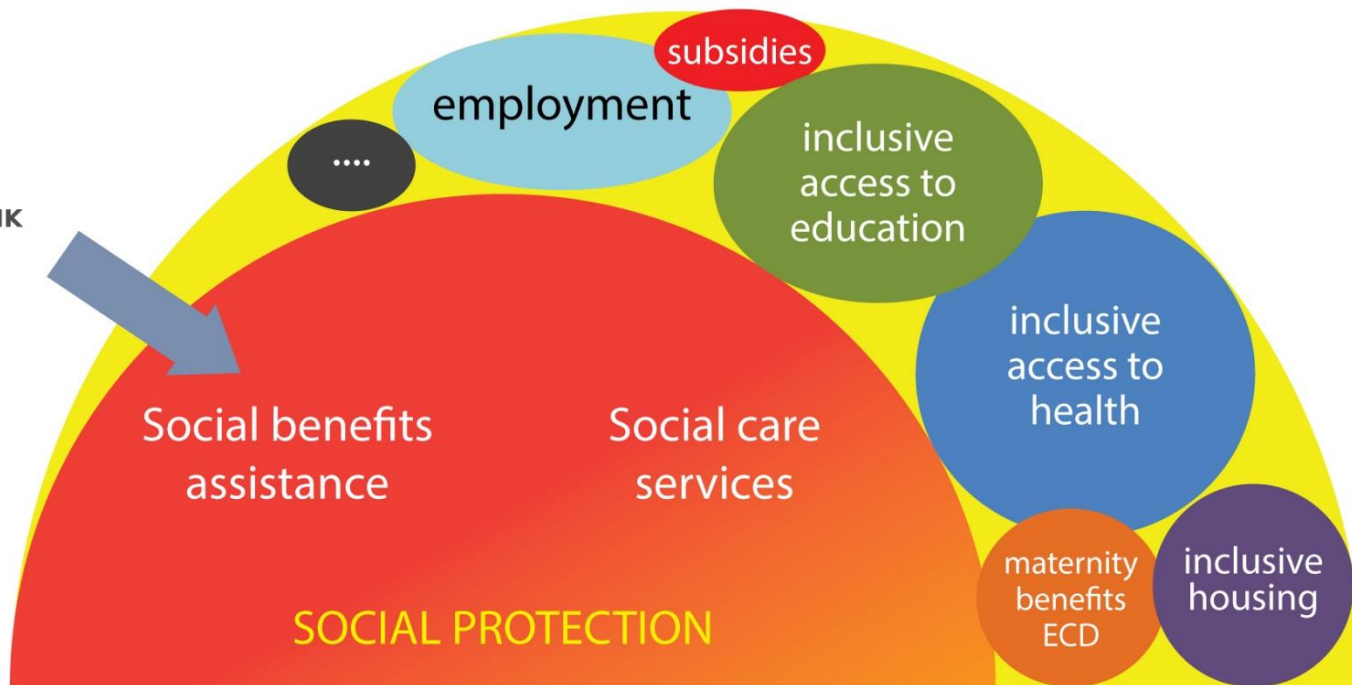
What do we mean by social inclusion?





# BACKGROUND

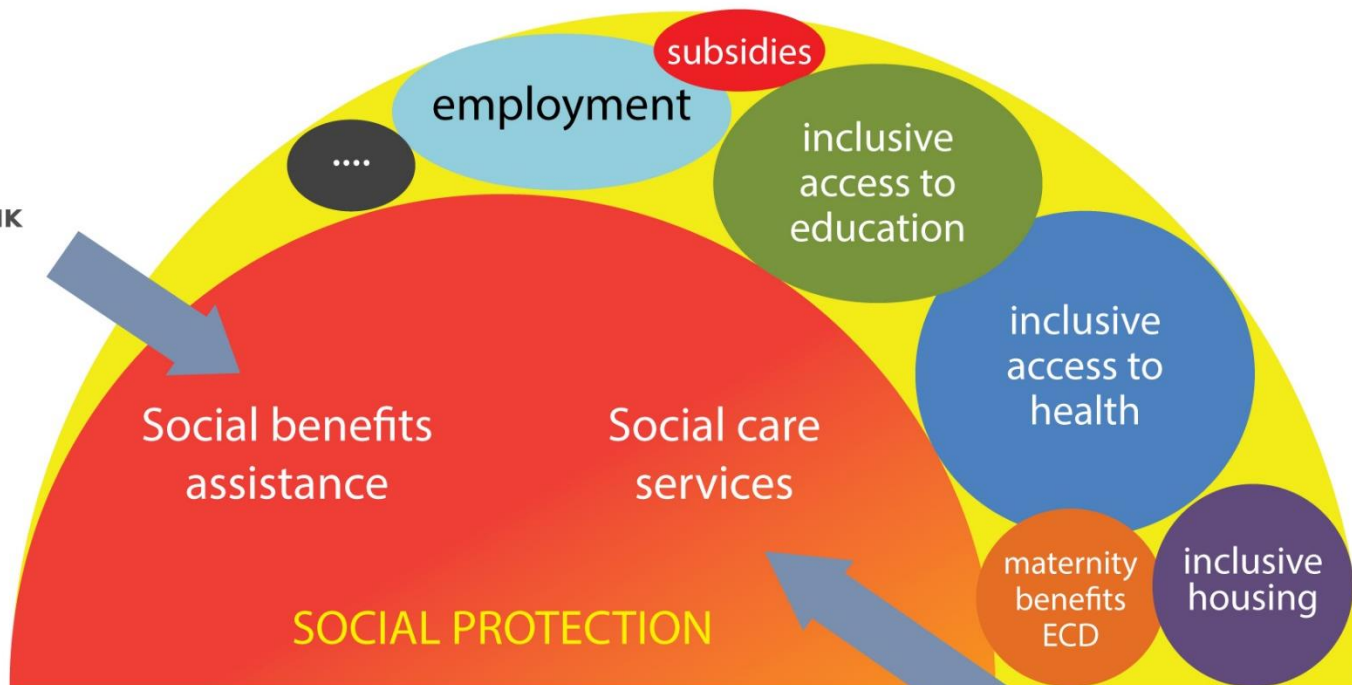
What do we mean by social inclusion?





# BACKGROUND

What do we mean by social inclusion?





# BACKGROUND

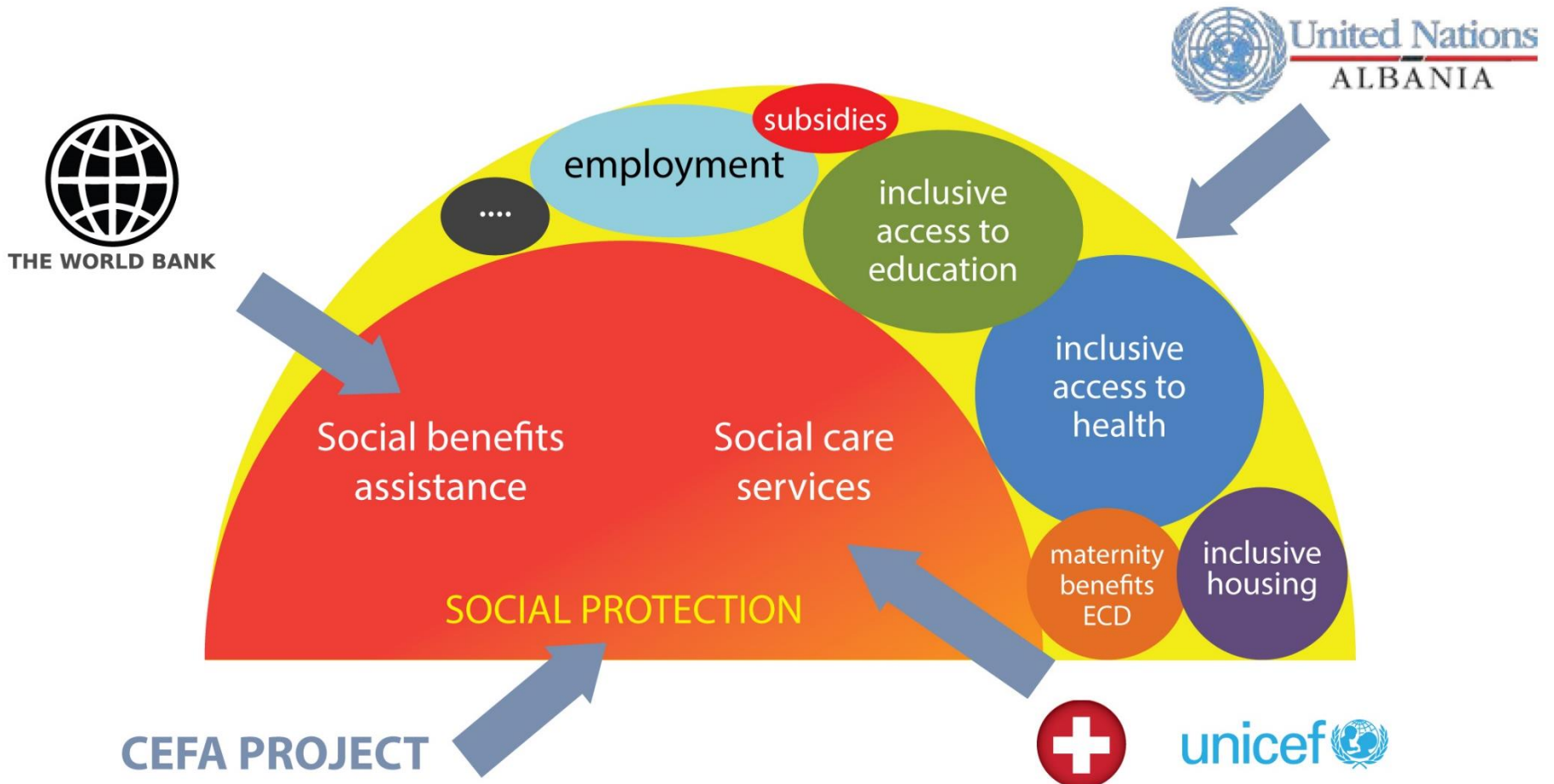
What do we mean by social inclusion?





# BACKGROUND

What do we mean by social inclusion?







# CAPEX

## ■ CAPEX Special Ingredients of the Swiss meal offered to the Albanian Social Sector



Professionalization of social work

Catch up classes

Evidence based social housing Strategy

Youth Disability Forum

Technology for people with disabilities

Needs assessment and referral units



# Strategic Outlook

## ■ General Considerations:

Combine central-local level interventions

Apply multidimensional & systemic approaches

Connect to national policy framework

Build up on existing resources

Target group?





# Strategic Outlook

## ■ Should SDC continue its support?

- Needy targets groups
- Community development and civil society strengthening
- Territorial reform: new municipalities; mix of urban and rural structures
- Social inclusion impact on EU accession
- Supplement to the mainstreaming
- Added value to the work



# Strategic Outlook

## ■ Suggested entry points:

### Social inclusion at local level:

- Planning; Implementation; Monitoring & Evaluation; Capacity Building

### Social care services at local level:

- Standard Training Curricula; Services in Remote Areas; Tools for LGUs; Engagement of NGOs

### Social inclusion data, indicators and monitoring:

- Local Level Data & Information systems, National Social Inclusion Indicators Group

### National policy framework implementation:

- Focal Point in Coordination; Annual Report

### Sector related entry points:

- Health, VET & Employment, etc.



# Open Questions? ...Reality Check

- Please further fine-tune the entry points no 1, 2 and 3.
  
- What kind of concrete projects can SDC support in relation to entry point no 1, 2 and 3?