

[View this email in your browser](#)



# Shareweb POVERTY – WELLBEING .net

Newsletter Dec 2017



## **A MUST READ BEFORE THE HOLIDAYS!**

Or why not take it with you for an inspiring reading time?

Dear colleagues,

December is the month to reflect. At Poverty-Wellbeing we ask ourselves: Did we do enough to implement our commitment to 'leave no one behind'? This question is not only relevant to us, it is central to everyone working on the Agenda 2030. In this newsletter you will find inspiring reflections and good practice examples which are pertinent to reaching the most marginalized people and to the successful implementation of LNOB.

The Poverty-Wellbeing Team wishes you an interesting read, a nice holiday season, and a successful 2018!



Anne Moulin, Poverty Reduction and Social Development Adviser, SDC



# The Path to Leave No One Behind

There are many who proclaim 'leave no one behind' (LNOB) as the new paradigm shift in development. While, from a conceptual perspective, LNOB is the continuation of 'inclusive development' which replaced 'pro-poor growth' in the early 2000s, it indeed marks a paradigm shift for development practice. The MDGs lacked clear goals on inclusion. Consequently, 'pro-poor growth' and 'inclusive development' could be (mis-)used by development practitioners as rhetorical devices rather than creating practical commitment. With the Agenda 2030, this is no longer possible. LNOB unambiguously implies that people at the very bottom are the top priority – for all SDGs! How can this be achieved? How can we design and implement our programmes/projects in a way that they effectively improve the lives of the ones at the very bottom?



Kim Andreas Kessler, SDC

[Read more »](#)



## Beneficiary Assessment of the Katalyst Programme in Bangladesh

SDC uses Beneficiary Assessments to learn from the views of beneficiaries. The Institute of Development Studies (IDS) was commissioned to implement a Beneficiary Assessment of the Katalyst programme in Bangladesh, a market systems programme in operation since 2002. IDS designed and carried out in collaboration with Praxis (Institute for Participatory Practices, India) a research process that aimed to build an understanding of the needs and concerns of farmers (as articulated by them) and to assess whether these coincide with benefits ascribed to market systems programmes. Using Participatory Systemic Inquiry, this novel approach to a Beneficiary Assessment led to rich learning that validated the orientation of the SDC Bangladesh strategy.

[Read more »](#)

---



## Briefing Paper "Global Inequalities"

As part of the SDC Learning Trajectory on Global Inequalities, the Centre for Development and Environment (CDE) developed a Briefing Paper on “Global Inequalities”. It provides SDC staff with the state-of-the-art knowledge on inequalities and its link to poverty reduction. In combination with the results of an internal SDC Inequalities Mapping, the paper is the foundation for current discussions within and beyond the Learning Trajectory Group on how SDC can efficiently and effectively contribute to SDG 10 and the Agenda 2030's political commitment to ‘leave no one behind’.



Kim Andreas Kessler, SDC

[Learn more »](#)

---

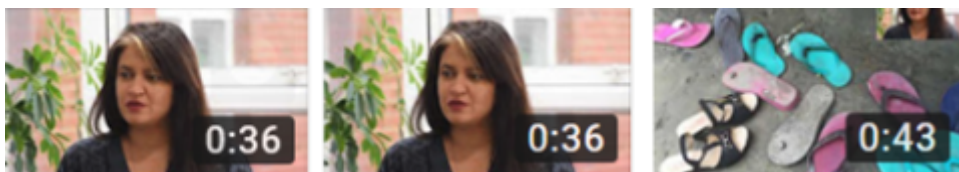


## Operationalizing SDC's Poverty Focus in Bangladesh

“Poverty” and its alleviation lie at the core of SDC’s mandate and therefore is the key objective of SDC’s engagement in Bangladesh. Since late 2013, SDC-Bangladesh has been working to raise awareness among staff and partners about poverty and inclusion, to assess how it monitors its interventions, and to provide additional guidance for partners with regard to identifying, targeting, monitoring and measuring the effects of their activities in relation to poor and disadvantaged people. In 2016, an exercise was started by SDC Bangladesh

and its partners to arrive at a common meaning of poverty, to ensure strategies for tackling poverty are hardwired into SDC and partner's theory of change, and to strengthen the capacity of SDC partners to monitor their interventions and set specific targets to reach the poor and disadvantaged. As part of the [SDC Quality Assurance and Poverty Reduction Section's collaboration with the Institute of Development Studies](#) (IDS), this process was accompanied by an IDS fellow.

*To learn more about the IDS Accompaniment to SDC on the Operationalization of the Poverty Focus in Bangladesh, watch these shorts videos with Naomi Hossain, IDS fellow matched to this accompaniment:*



Jane Stevens, IDS

[Read more »](#)

---

**Market Systems Approaches and  
'Leaving No One Behind'**



The Agenda 2030 has set the clear commitment to 'leave no one behind'. What role can market systems approaches play in reaching the most marginalized people? Jodie Thrope conducted a structured analysis on this question, with specific suggestions on entry points to overcome economic exclusion and key factors for the success of programmes which apply a market systems approach and aim to reach people at the very bottom.



Kim Andreas Kessler, SDC

[Read more »](#)

---

**AVAILABLE ON REQUEST**

# Exclusive **IDS** Support for **SDC** Field Offices

Did you know that SDC field offices and operational units can request exclusive support from IDS experts for activities around poverty and inequality?

[Learn more »](#)

---



## Poverty-Wellbeing Team

Dear colleagues, my academic internship with SDC terminates end of December 2017. My next destination is the University of the South Pacific in the Fiji Islands. In times of newsletters being as numerous a coconut trees on Pacific shores and time for reading almost as rare as snow in the Fiji Islands, I hope our Newsletter managed to inspire your work throughout this year and will do so in the future.

My contact to keep in touch: [info@kimke.ch](mailto:info@kimke.ch).

With best wishes,



Kim Andreas Kessler,  
Academic Intern, QA and Poverty Reduction Section, SDC



## Contribute to this Newsletter

The Poverty-Wellbeing Team invites you and other professionals to submit contributions related to Poverty Issues (e.g. articles, news, announcements, upcoming events) to be featured in this newsletter and our Shareweb. To express interest and submit contributions, please contact [poverty-wellbeing@helvetas.org](mailto:poverty-wellbeing@helvetas.org).



---

*Copyright © 2017, All rights reserved. Swiss Development Cooperation.*

This newsletter has been sent to you as member of the SDC Poverty-Wellbeing Shareweb. The Shareweb is created by the SDC Quality Assurance Poverty focal point, and managed by HELVETAS Swiss Intercooperation. For technical support, please contact Cesar Robles ([poverty-wellbeing@helvetas.org](mailto:poverty-wellbeing@helvetas.org)).  
Icons by Flat Icons in [flaticon.com](http://flaticon.com)

[Subscribe to our mailing list to receive this newsletter.](#)



---

This email was sent to <<Email Address>>  
[why did I get this?](#) [unsubscribe from this list](#) [update subscription preferences](#)  
Poverty-Wellbeing SDC Shareweb · Weinbergstrasse 21a · Zurich 8021 · Switzerland