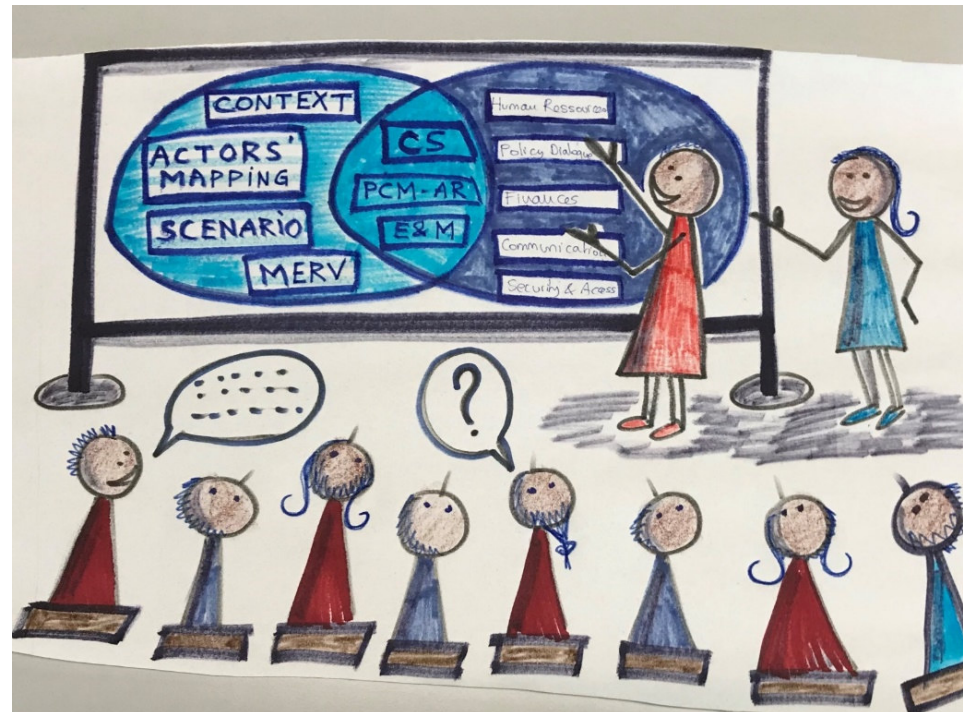




Schweizerische Eidgenossenschaft
Confédération suisse
Confederazione Svizzera
Confederaziun svizra



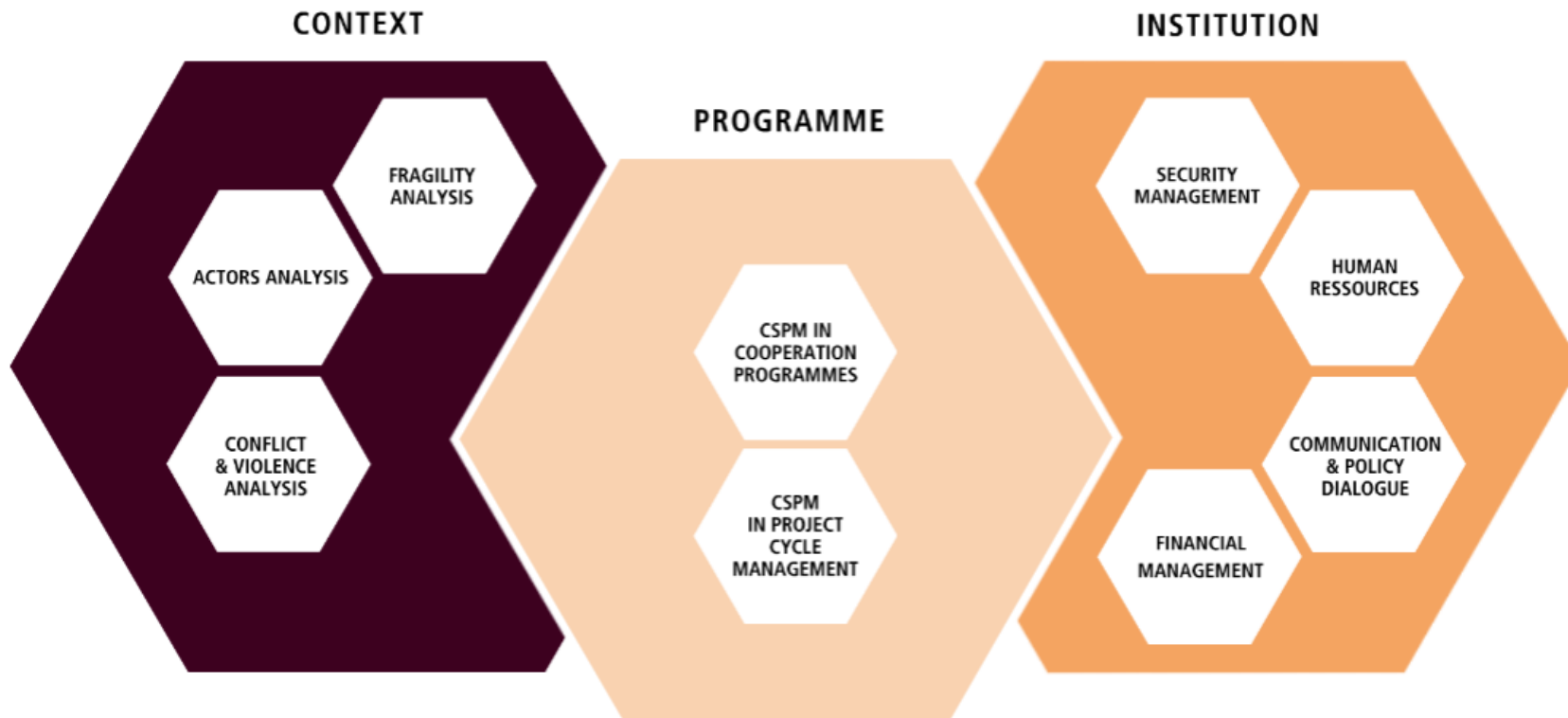
Integrating CSPM in Cooperation Programmes, Annual Reports, MERV, Entry & Credit Proposals





Tool Box CSPM

Conflict Sensitive Programme Management



<https://www.shareweb.ch/site/Conflict-and-Human-Rights/startpage-tools/cspm-tool>

Integrating CSPM in EPs & CPs: Key elements to be considered

- **Context Analysis:** What are the root causes of social and political conflict / fragilities?
- **Strategic orientations:** How does the intervention contribute to the reduction of root causes of fragility, conflict and violence, support to reform processes & human rights?
- **Stakeholders' assessment:** Who are the stakeholders and what are their interests, agendas, alliances? What consequences for 'do no harm' and conflict prevention?
- **Objectives:** What contributions to conflict prevention and transformation?
- **Intervention strategy:** Does the intervention strategy duly take into consideration elements that divide or connect groups and how to strengthen connectors and mitigate dividing factors?
- **Risks management:** How is the intervention intervening in changing existing power structures and how is it mitigating the risks of strengthening divisions and conflicts?



Integrating CSPM in the MERV process & document: Key elements to be considered

- Organise a collective analysis of the evolution of the context (SCO & Embassy teams, HSD, other WoGA actors in the field, etc.)
- Ideally, relevant fields of observation have been identified beforehand in an actors' mapping or conflict analysis exercise. Overarching questions are: What changed? How will these changes affect the Swiss Program? How will the program and context interact?
- Aim for an inclusive and participatory team process. Collect as many subjective impressions, perspectives and interpretations as possible, triangulate and compare them to enhance the global picture.
- Make use of social / economic / ethnic diversity among participants to build a nuanced narrative.

Integrating CSPM in the Annual Reports: Key elements to be considered

- (1) Make contextual analysis and statements in reference to conflict, fragility and peace building;
- (2) Make results statements within a contribution logic towards the reduction of conflict causes, strengthening of the State and societal resilience, and better enjoyment of human rights;
- (3) Use the RF to give information about important outcomes and results related to CSPM and the contribution to conflict prevention / transformation and peace promotion as sector, but also transversally in other sectors;
- (4) Give information about the underlying theory of change per domain of intervention for the reduction of poverty, vulnerability and aspects of fragility.

Integrating CSPM in Cooperation Programmes: Key elements to be considered

- **Joint Fragility Assessments**
- **Nexus Logic**
- **Human Rights**
- **Adaptive Management**
- **Remote monitoring, third-party monitoring**
- **Results Framework, incl. ARIs, TRIs**



Schweizerische Eidgenossenschaft
Confédération suisse
Confederazione Svizzera
Confederaziun svizra



Questions & answers