



## SDC AGRICULTURE & FOOD SECURITY PORTFOLIO 2009-2011

### Overview of SDC's activities in the field of Agriculture and Food Security

#### BACKGROUND

Achieving food security remains a global challenge. In many developing countries, agricultural production plays a vital role in terms of food security and is often the most important sector in the national economy. In many rural environments, agriculture-based activities remain crucial for most of the poor population. As three quarters of the poorest and food insecure populations in developing countries live in rural areas, improvements in agricultural production, productivity, and the marketing of harvested crops have an immediate and positive impact on the people's livelihoods.

But farming faces a number of challenges like the sustainable use of natural resources, land tenure, economic development, the preservation of cultural values, or positive nutrition outcomes.



By supporting areas agriculture and food security, SDC provides a substantial contribution to poverty reduction. In contrary to many other development agencies SDC has continuously increased its contribution towards agriculture and food security in the past years. SDC's commitment is expected to maintain at the actual level or even to increase slightly in the near future, given the new challenges such as climate change, population growth or food price volatility.

#### AGRICULTURE & FOOD SECURITY AT SDC

Besides projects related to agriculture and food security (A+FS) at national and regional level, SDC has established a Global Programme Food Security (GPFS) to coordinate initiatives and projects on global level. SDC influences global policy discussions and contributes to international frameworks,

institutions and networks to improve global architecture for food security, but it also initiates innovative projects. A specific focus is given to sustainable increase of production and productivity of smallholder agriculture, especially of women farmers that are often the most vulnerable population groups concerning food security. SDC has established the Agriculture + Food Security (A + FS) Network to assure institutional learning and awareness building related to agriculture and food security. The network counts over 200 active members world-wide.

#### PARTNERS AND GLOBAL POLICY DIALOGUE

SDC collaborates with a wide array of partners and is active on global level in a number of institutions. Besides others, SDC represents Switzerland in the following multilateral organisations: the CGIAR for international agricultural research, the International Fund for Agricultural Development (IFAD) and the World Food Programme (WFP). SDC also contributes to relevant international institutions, networks and platforms, like the Food and Agriculture Organisation (FAO), the Committee on World Food Security (CFS), the International Land Coalition (ILC), the Global Forum for Rural Advisory Services (GFRAS), the Global Donor Platform for Rural Development (GDPRD) and the European Initiative for Agricultural Research for Development (EIARD). In Switzerland important partners among the Swiss NGO's are Helvetas Swiss Intercooperation and Biovision, and public institutions such as the School for Agriculture, Forest and Food Science (HAFL), the University of Bern with its Centre for Development and Environment (CDE), the Swiss Federal Institute of Technology Zurich (ETH) and Agridea. SDC has also partnerships with the private sector, such as Alliance Re on weather insurance projects.



**DATABASE FOR SDC A+FS PORTFOLIO**

This portfolio analysis is based on data of the years 2009 to 2011, taken from SDC's data platform SAP. All projects allocated to the SAP sector "Agriculture / Rural Development" are included. In addition, all multi-bi projects" of the SAP sub-sectors "Agricultural water resources and "Biodiversity" with a clear focus on A+FS are considered. This selection was carefully consulted with the help of SDC-staff. Further, all projects implemented by the WFP are included. Multilateral core contributions to CGIAR, IFAD, the Centre for Agriculture and Biosciences International (CABI), the United Nations Convention to Combat Desertification (UNCCD), and the WFP are included in the analysis. Contributions to the World Bank and the regional development banks (African-, Inter-American and Asian Development Bank) are considered as far as their programmes can be attributed to A+FS (data basis for calculating the part allocated to A+FS is their respective annual reports).

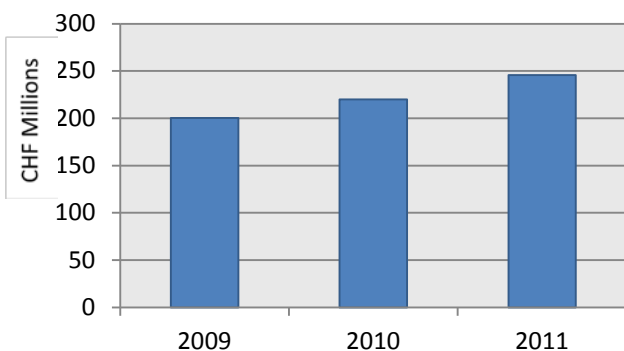
Payments for debt relief and equity contributions are not considered in this analysis. For calculating total SDC disbursements and for differentiating between multilateral, bilateral and contributions to Swiss NGOs, SDC's contribution to Swiss NGO-programmes in the fields of "Agricultural development", "Rural Development" and "Urgent food aid" were included. These data were collected by SDC's statistic division.

All indications of this portfolio analysis are in Swiss Francs and include 453 bilateral (including multi-bi) projects, 14 multilateral contributions and contributions to NGO's.

**SDC'S EXPENDITURES FOR A+FS**

A+FS is increasingly gaining importance in SDC. In 2009, a total of CHF 200.3 Mio or 13.8 % of SDC's total disbursements were allocated to A+FS. In 2010, the total increased to CHF 219.8 Mio (14.6 % of SDC's total disbursements) and up to CHF 245.6 Mio in 2011 (14.6 % of SDC's total disbursements).

**SDC Disbursement in A+FS**

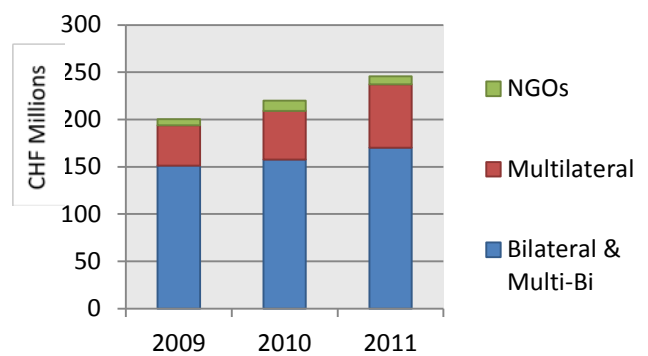


**Multilateral, bilateral and NGO contributions**

In 2011, 69.4 percent of the A+FS budget were disbursed for bilateral projects, 27.3 percent for multilateral contributions and 3.3 percent to Swiss NGO programmes related to A+FS.

In 2011, the highest A+FS related multi contribution was allocated to the World Bank (CHF 30.9 Mio), to IFAD (CHF 14.1 Mio, an outlier year because of payments for previously delayed contribution), to CGIAR (CHF 14.0 Mio), to the Asian Development Bank (CHF 2.9 Mio), to the WFP (CHF 2.5 Mio), and to the African Development Bank (CHF 2.1 Mio).

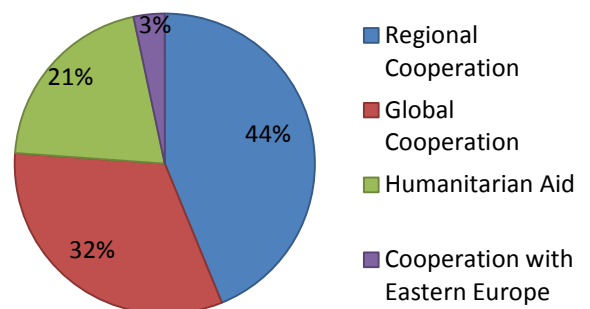
**Differentiation of expenditure in Multilateral, Bilateral & Multi-Bi and NGO**



**A+FS within SDC**

A+FS related interventions can be found in all four SDC corporate domains (Global Cooperation, Regional Cooperation, Humanitarian Aid and Cooperation with Eastern Europe). The chart below shows the distribution of SDC expenditures for A+FS.

**Breakdown of SDC's investments for A+FS by domain in 2011**



The largest share (44%) of SDC investments related to A+FS were disbursed by the Regional Cooperation, followed by the Global Cooperation and the Humanitarian Aid. A+FS projects in Cooperation with Eastern Europe use less financial resources. The trend from 2009 to 2011 shows that the importance of A+FS projects in the Global and Regional

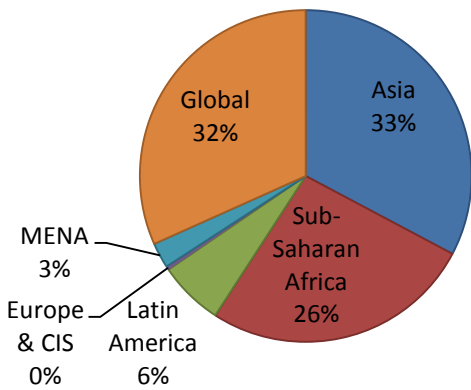
**A+FS PORTFOLIO OF SDC: 2009-2011**

Cooperation has further increased. A+FS projects in Eastern Europe are further decreasing, because the economic transition in those countries bring a stronger investment focus towards the private sector rather than specific agricultural development.

**Geographical focus**

In 2011, most disbursements of SDC for A+FS were allocated to Asia, followed by Global and Sub-Saharan Africa. The importance of Asia for SDC is also shown in the total number of projects. During 2009-2011, a total of 151 projects were implemented in Asia, followed by 136 in Africa, 89 projects with a global scope and 57 in Latin America.

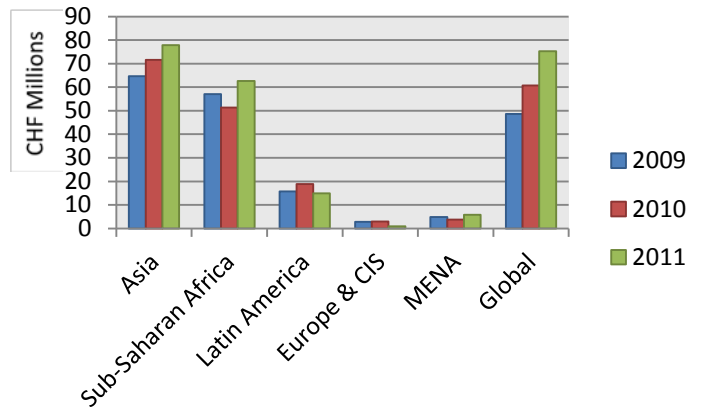
**Investments in A+FS in geographical regions**



The increasing importance of global projects can be explained by the creation of the Global Programme (GPFS) in 2008. GPFS disbursements rose from CHF 27.4 Mio in 2009 to CHF 41.4 Mio in 2010 and reached CHF 43.6 Mio in 2011. A further reason is the higher share of the contribution to the World Bank allocated to A+FS from CHF 17.3 Mio in 2009 and CHF 18.4 Mio in 2010 to CHF 30.9 Mio in 2011. Also important are the exceptional payments to IFAD in 2010 and 2011, due to previously delayed payments. Actually, most activities from GPFS and IFAD have a focus on Sub-Saharan Africa but are allocated to "Global". If these projects were added, SSA's importance in SDC's A+FS portfolio would gain much more importance.



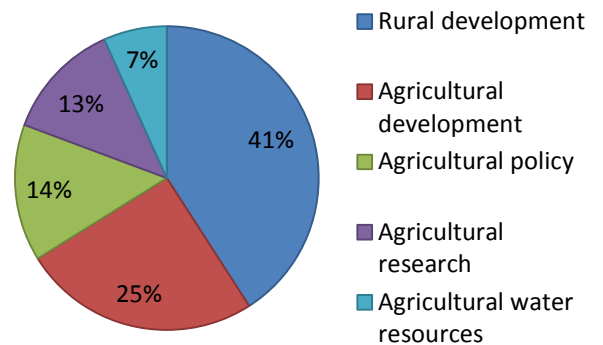
**Annual investments in A+FS in geographic regions**



**Thematic activities**

SDC's activities in A+FS cover a broad spectrum of activities. Nevertheless five thematic clusters have been considered:

**Thematic clusters of SDC in A+FS in 2011**



**Rural development** with CHF 59.9 Mio in 2011 is from a financial point of view the most important topic of SDC related to A+FS. It included a wide range of activities, such as projects in the area of rural transportation; promotion of decentralized and multi-sectoral capacity for planning; integration of rural and urban areas; land management and land use planning; as well as geographical information systems.

An example of a rural development project is the "Improved Livelihoods of Rural Communities", which reduces poverty through strengthening sustainable livelihoods in four selected districts of Afghanistan by the increase of self-subsistence and income through improved and diversified production systems (agriculture/livestock) and better access to markets.

**Agricultural development** (in 2011, CHF 36.7 Mio) deals with integrated on-farm, farm development, food crop production, livestock, plant and post-harvest protection and pest control.

## A+FS PORTFOLIO OF SDC: 2009-2011

**Agricultural policy** (in 2011, CHF 21.2 Mio) includes support to agricultural sector policy, planning and programmes; aid to agricultural ministries; and institution capacity building and advice. As many projects in agricultural policy ended recently, this thematic activity lost in importance.

**Agricultural research** (in 2011, CHF 18.3 Mio) includes plant breeding, physiology, genetic resources, ecology, taxonomy, disease and pest management, and agricultural biotechnology.

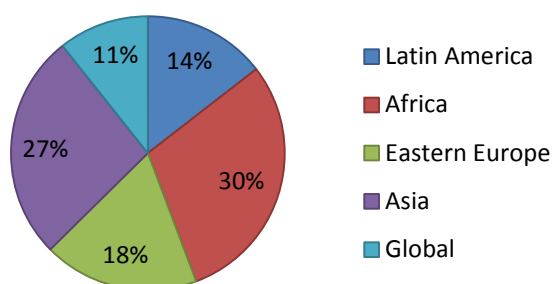
**Agricultural water resources** (in 2011, CHF 9.8 Mio) has gained in importance due to the 0.5 % Message of the Swiss Parliament, which have an emphasis on climate change and water. Agricultural water resources support projects in irrigation and ground water exploitation for agricultural use.

**Other activities** (in 2011, CHF 101.7 Mio): SDC is also active in other A+FS fields, which do not fit into the five thematic clusters mentioned above. This includes WFP projects in the field of emergency food aid, projects in forestry development and agro-biodiversity as well as contributions to multilateral organisations.

### Highlight: Rural Advisory Services

An important aspect within rural innovation systems of the SDC A+FS portfolio is the support to improved Rural Advisory Services (RAS). For this reason, the A+FS network commissioned a study in 2011. It showed that RAS projects are present in all five A+FS thematic clusters of SDC. Today around 131 SDC supported projects, mostly in Africa and Asia, are in the field of RAS. In 2010, the total budget spent for RAS was CHF 40 Mio<sup>1</sup>, divided into 131 projects, which are mostly in Africa and Asia.

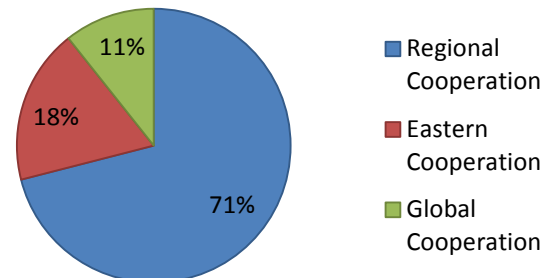
### Amount of SDC's RAS projects in different geographic regions in 2010



A shift from the "linear" public research-extension-farmer model (e.g. Train & Visit model) towards a

decentralised and pluralistic service provision based on new models of RAS institutions and financing schemes can be observed. In recent years, SDC has also supported the inclusion of more private partners.

### Amount of RAS projects in different domains of SDC in 2010



In 2010, 93 of the RAS-projects were implemented by Regional Cooperation, 24 by Eastern Cooperation and 14 by Global Cooperation.

### Future perspectives

The Dispatch 2013-2016 reaffirms the importance of Agriculture and Food Security and considered the topic as one of the nine priority themes for SDC as well as one of the global themes. The A+FS Network has been reflecting on the A+FS dimensions and has proposed to add "Nutrition-sensitive agriculture" as a topic for future consideration.

January 2013

### CONTACT

[gpfs@deza.admin.ch](mailto:gpfs@deza.admin.ch)

### FURTHER INFO

<http://www.sdc-foodsecurity.ch>

SDC Agriculture and Food Security Network



<sup>1</sup> More information on RAS can be found on: [http://www.sdc-foodsecurity.ch/en/Home/SDC\\_resources/A\\_FS\\_Network\\_Publications](http://www.sdc-foodsecurity.ch/en/Home/SDC_resources/A_FS_Network_Publications)