

# Inclusive Land Governance: The Swiss System

austauschen  
verstehen  
weiterkommen

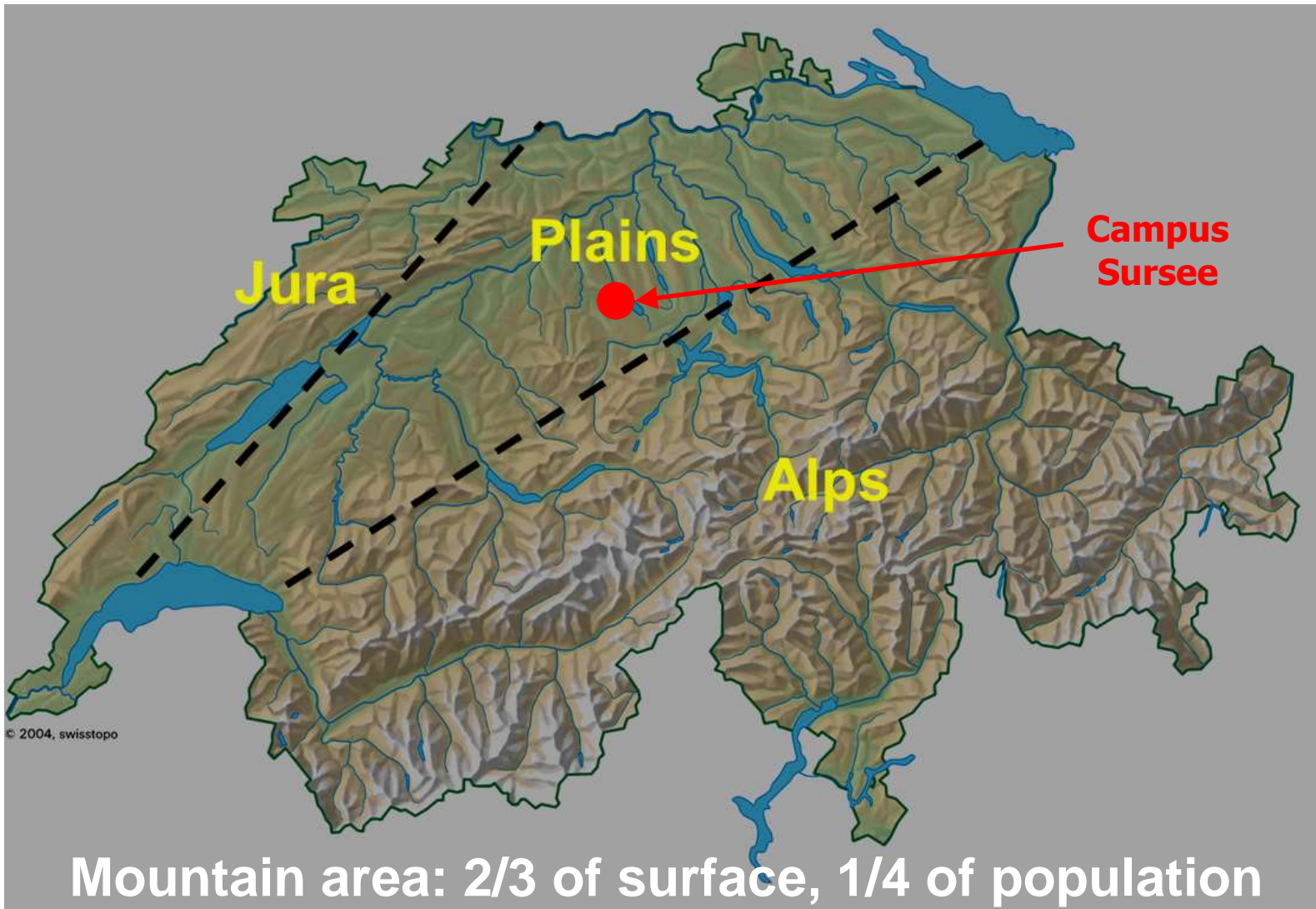


Ueli Straub / A+FS-Network Meeting / September 7 2016

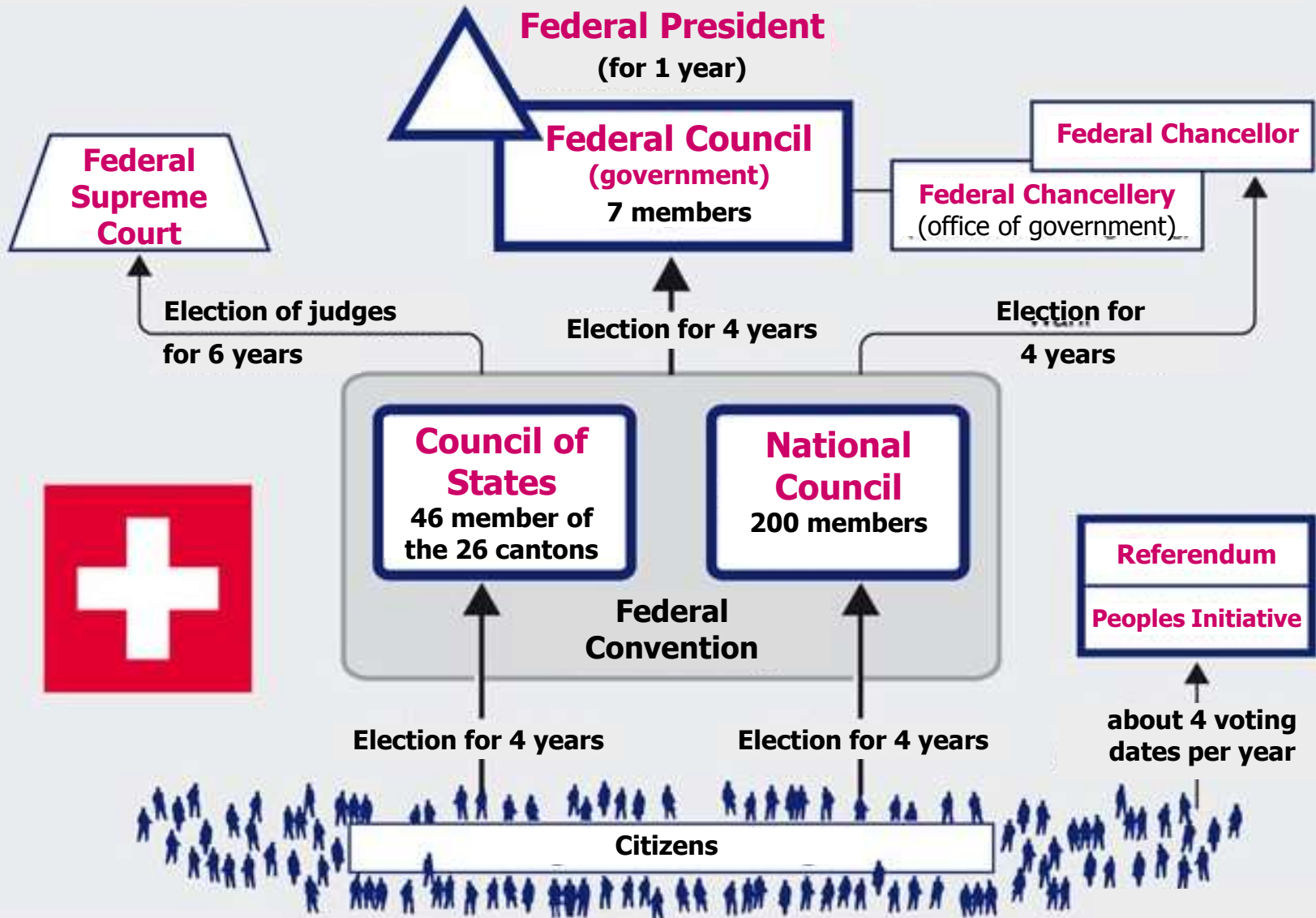
# Content

- Geography – Difficult Conditions
- Political System – Stable and Inclusive
- Economy – Successful and Global
- Agriculture – Small and Precious
- Spatial Planning – A Succession of Mediations
- Case Studies – Promoting tomorrows Field Visits

# Swiss Geography: Mountains predominate



# Political System of Switzerland (since 1848)

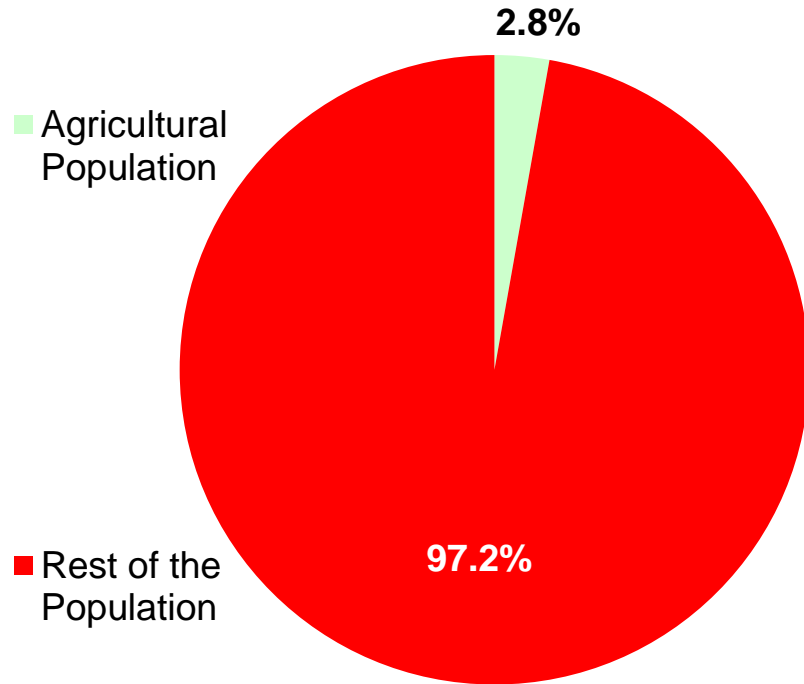


# Swiss Economy: Key Figures 2015

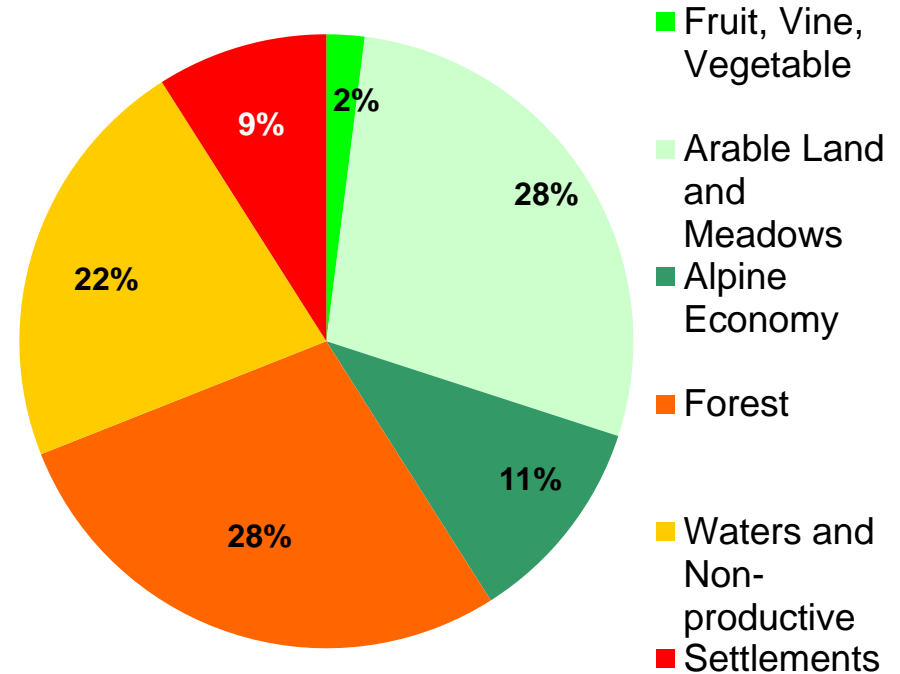
	CH	EU19	USA	China	India
Population (million)	<b>8.3</b>	338.5	321.6	1'374.4	1'292.7
Area (1'000 km <sup>2</sup> )	<b>41.3</b>	2'785.5	9'826.7	9'597.0	3'287.3
Inhabitants per km <sup>2</sup>	<b>201</b>	123	33	143	393
Labor force (million)	<b>5.0</b>	163.1	164.2	823.5	516.2
Unemployment rate (%)	<b>3.3</b>	10.9	5.3	6.9	7.1
Gross dom. Product/capita (USD)	<b>80'060</b>	34'092	55'805	7'990	1'617
Exported goods (billion USD)	<b>289.8</b>	2'265.7	1'504.9	2'274.9	267.1
Imported goods (billion USD)	<b>253.2</b>	1'991.0	2'307.9	1'682.0	392.0
Trade balance (billion USD)	<b>36.6</b>	274.7	-803.0	592.9	124.9
Monetary reserves (billion USD)	<b>601.9</b>	701.4	118.5	3'406.1	350.4

# Swiss Agriculture I: Not important?

## Swiss Population

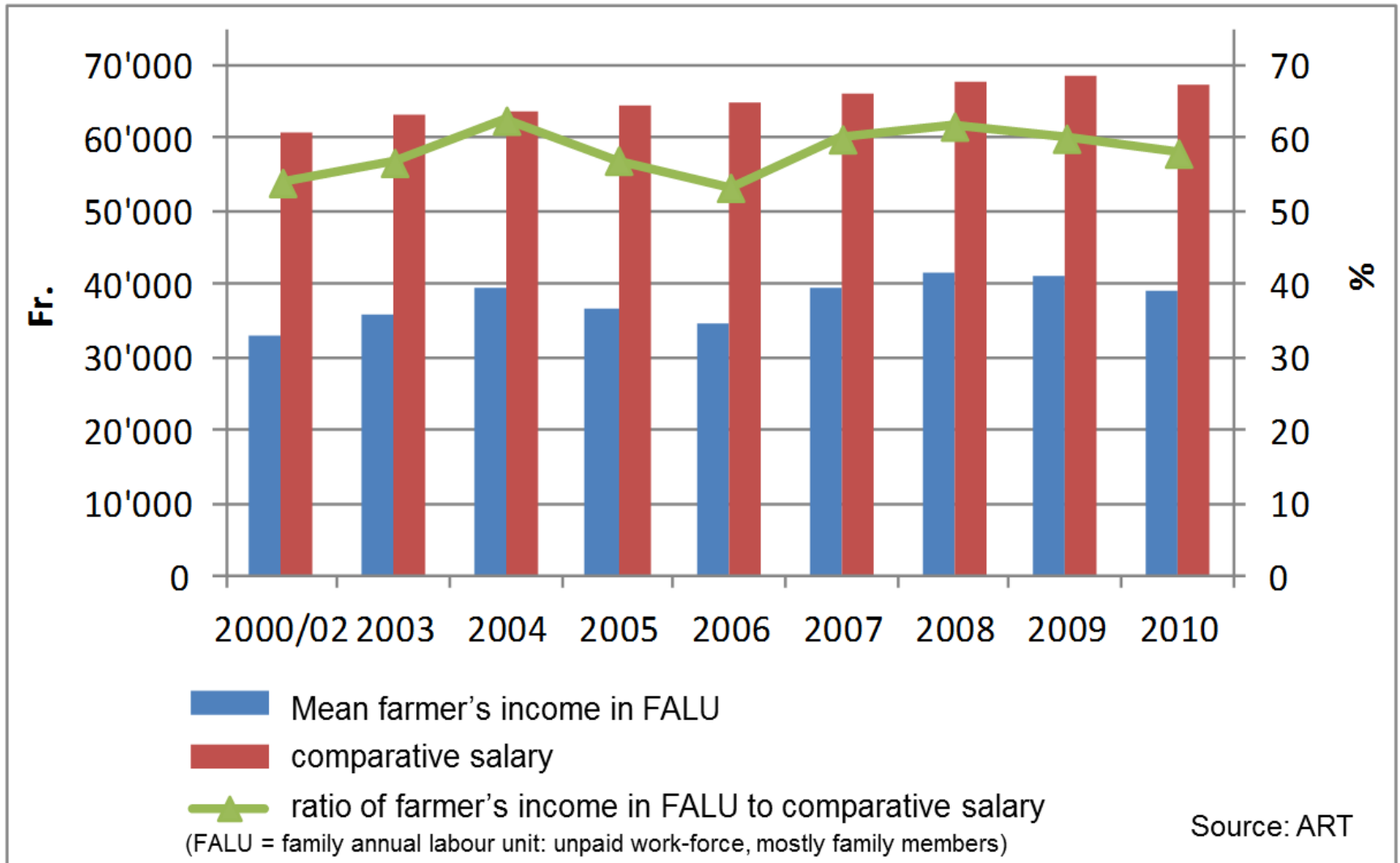


## Distribution of Area

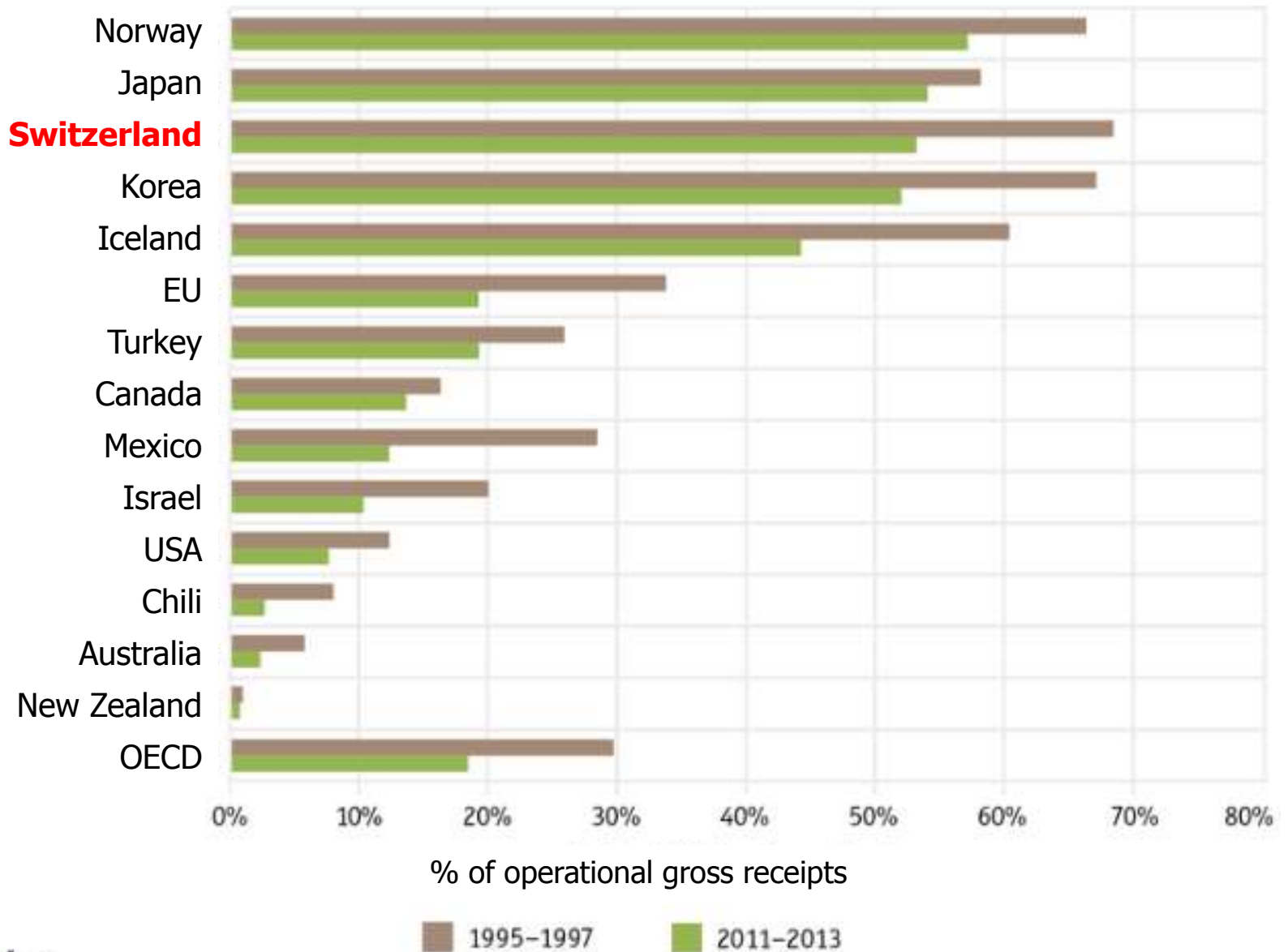




# Swiss Agriculture II: Small incomes in comparison



# Swiss Agriculture III: Strong governmental support





# Swiss Agriculture IV

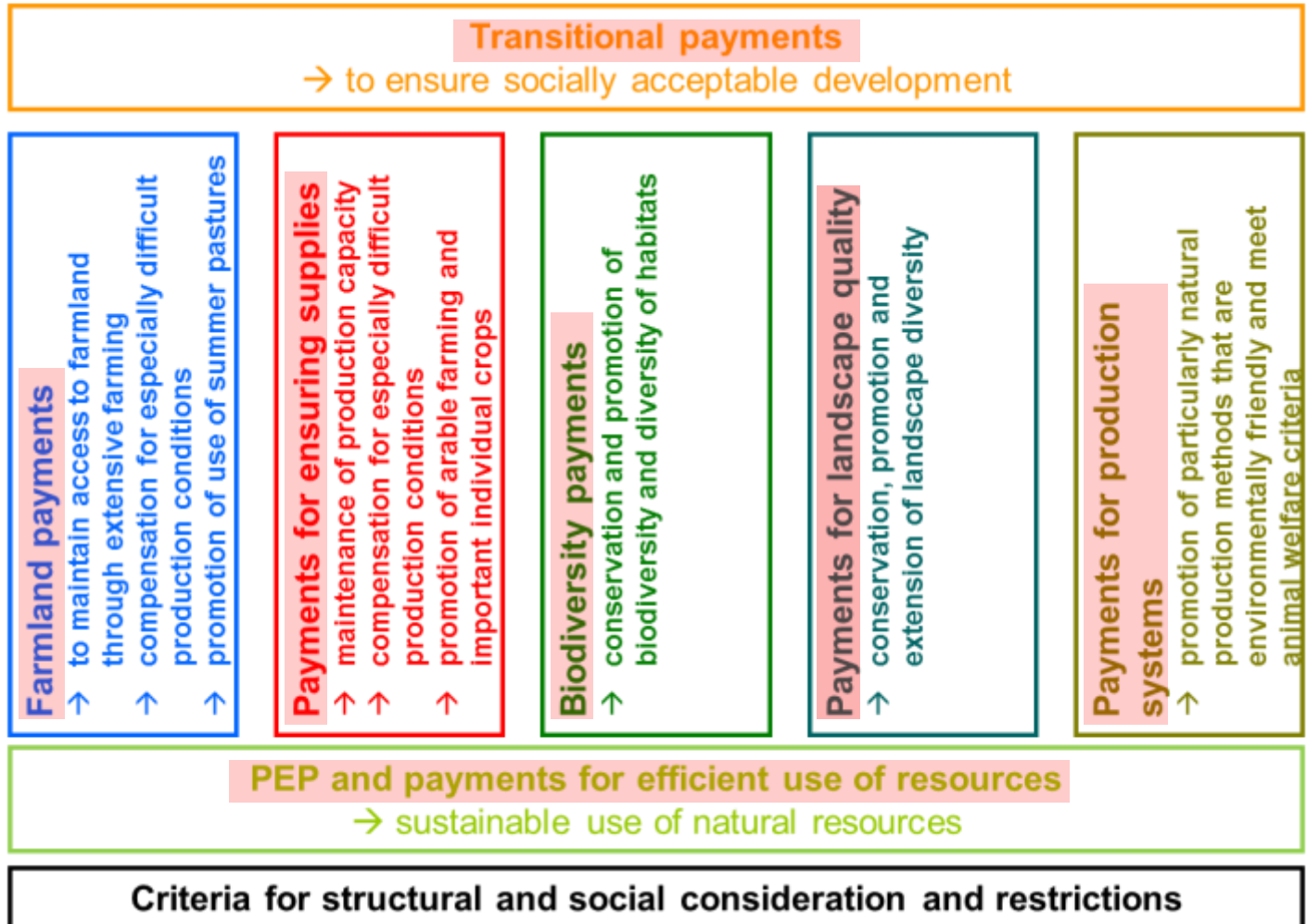
Art. 104

of the federal constitution

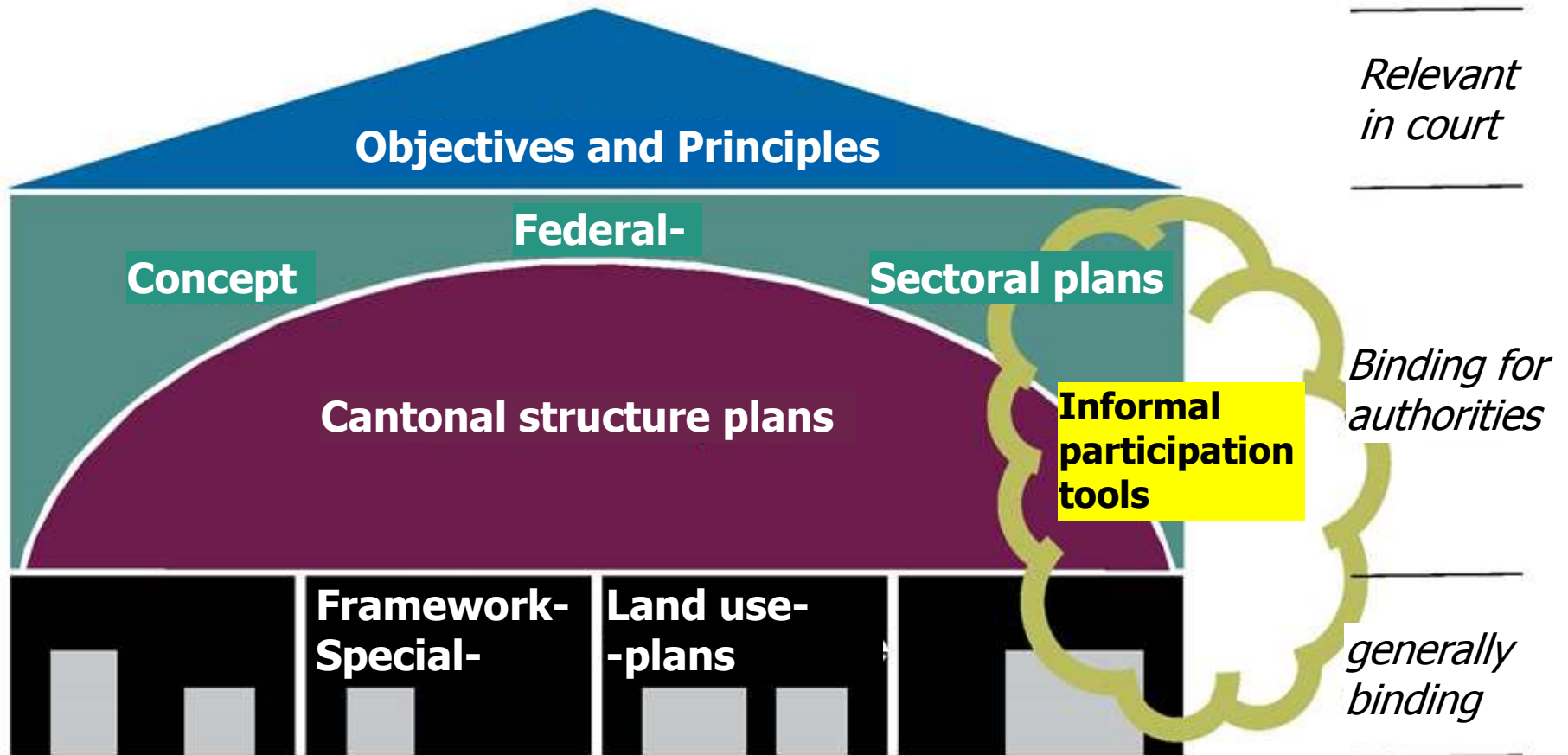
Ensured supplies, environmental stewardship, conservation of the natural heritage, decentralised settlement, promotion of particularly natural production methods that are environmentally friendly and meet animal welfare criteria

Agricultural Policy 2014-2017:

Direct Payments for public services



# Swiss Spatial Planning System



# Field Day „Swiss Land Governance“ – Choice of Visits I

## Groups **A** and **B** - Departure at **8.00 h**

- VISIT **1** **Inheritance law, Farm transfer** at family farm in Unterägeri ZG with Martin Pfister, consultant, and Remo Annen, young farmer
- VISIT **2** **Common Land Use** at Oberallmeindkorporation in Schwyz SZ with Daniel von Euw, managing director of OAK

## Groups **C** and **D** - Departure at **8.30 h**

- VISIT **3** **Farm cooperation** at farm community APMB in Alberswil LU with Franziska Wirz, FOAG, and Sepp Häfliger, farmer APMB
- VISIT **4** **Spatial planning** at a small country town, Willisau LU with Meinrad Huser, legal expert specialised in spatial planning

# Field Day „Swiss Land Governance“ – Choice of Visits II

## Groups **E** and **F** - Departure at **8.30 h**

- VISIT **5** **Farmland market, property consolidation** at village Reiden LU  
with Stephan Schneider, Cantonal office of agriculture LU
- VISIT **6** **Expropriation, water protection** at village Schlossrued AG  
with Beat Röösl, International issues at Swiss Farmers' Union

## Groups **G** and **H** - Departure at **8.30 h**

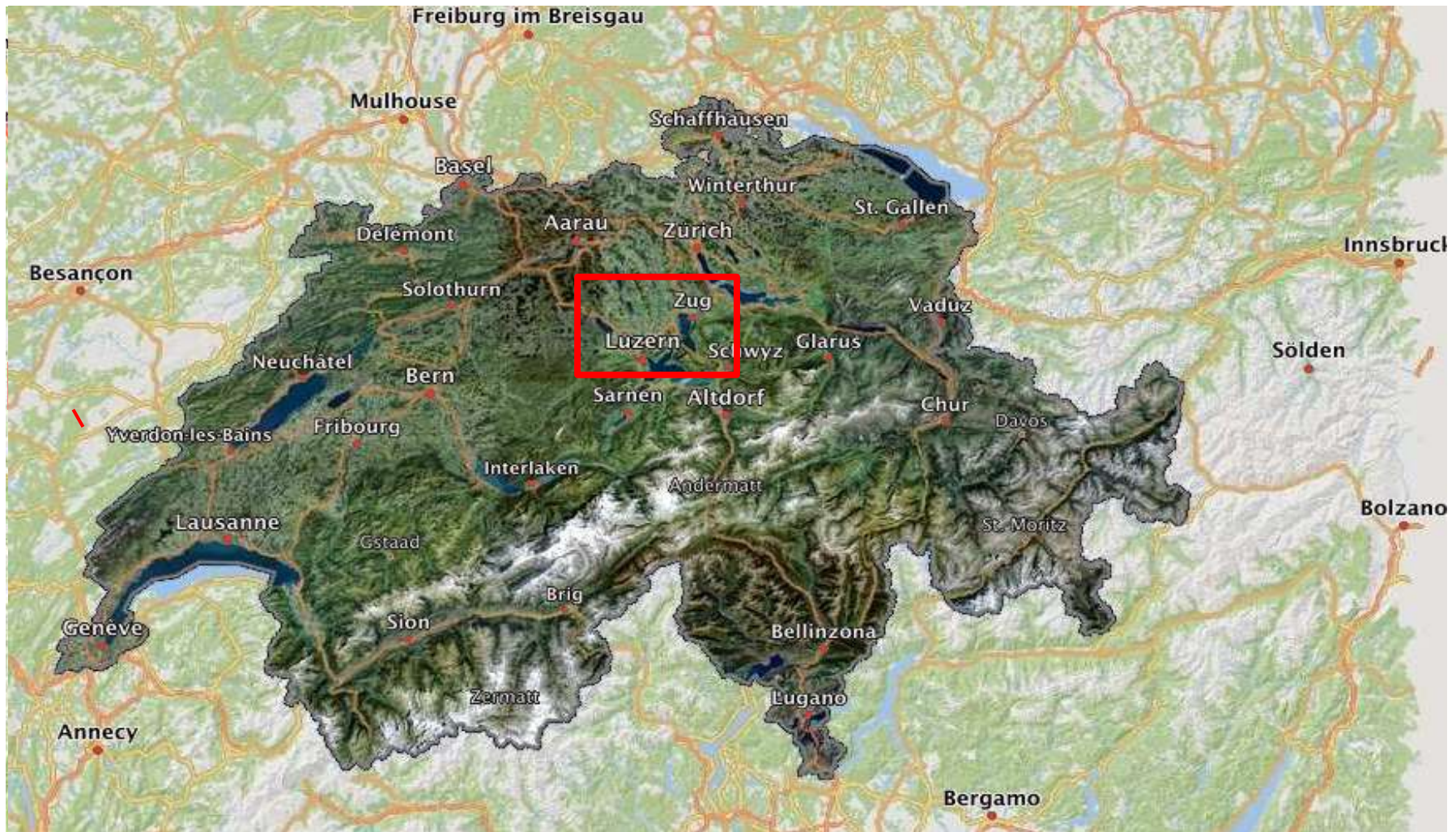
- VISIT **7** **Constructing outside building zone** at farm in Alberswil LU  
with Lukas Walther, consultant, and Fritz Birrer, office of agriculture
- VISIT **8** **Nature conservancy, ecological balance** at farm in Sempach LU  
with Franz Stadelmann, consultant, and Joe Ineichen, farmer

# Field Day „Swiss Land Governance“ - Program

Group:	<b>A</b>	<b>B</b>	<b>C</b>	<b>D</b>	<b>E</b>	<b>F</b>	<b>G</b>	<b>H</b>
Guide:	<b>Angela Deppeler</b>	<b>Daniel Mettler</b>	<b>Ueli Straub</b>	<b>Simon Degelo</b>	<b>Peter Bucher</b>	<b>Esther Thalman</b>	<b>Ruth Moser</b>	<b>Patrizia Schwegler</b>
8.00	Departure: <b>8.00 h</b> main entrance Campus	Departure: <b>8.00 h</b> main entrance Campus						
8.15								
8.30			Departure: <b>8.30 h</b> main entrance Campus	Departure: <b>8.30 h</b> main entrance Campus	Departure: <b>8.30 h</b> main entrance Campus	Departure: <b>8.30 h</b> main entrance Campus	Departure: <b>8.30 h</b> main entrance Campus	<b>Visit 8: Nature conservancy, ecological balance</b>
8.45								
9.00	<b>Visit 1: Inheritance law, farm transfer</b>	<b>Visit 2: Common land use</b>	<b>Visit 3: Farm cooperation</b>	<b>Visit 4: Spatial planning</b>	<b>Visit 5: Farmland market, voluntary property consolidation</b>	<b>Visit 6: Expropriation, water protection</b>	<b>Visit 7: Constructing outside building zone</b>	
9.15								
9.30	Expert on site: <b>Martin Pfister</b>	Expert on site: <b>Daniel von Euw</b>	Expert on site: <b>Franziska Wirz- Meier</b>	Expert on site: <b>Meinrad Huser</b>	Expert on site: <b>Stephan Schneider</b>	Expert on site: <b>Beat Rööfli</b>	Experts on site: <b>Lukas Walther, Fritz Birrer</b>	Expert on site: <b>Franz Stadelmann</b>
9.45								
10.00		<b>Guide = Translator</b>		<b>Guide = Translator</b>				<b>Guide = Translator</b> (nur für Betriebsleiter)
10.15								
10.30			<b>Guide = Translator</b> (nur für Betriebsleiter)					
10.45	<b>Guide = Translator</b> (nur für Betriebsleiter)						<b>Guide = Translator</b>	
11.00					(visit ends at Kommende Reiden)			(Visit starts with input at Campus Sursee, departure to site later: ca. 9.45)
11.15								
11.30	Departure for lunch: <b>11.45 h</b>	Departure for lunch: <b>11.45 h</b>	Departure for lunch: <b>11.30 h</b>	Departure for lunch: <b>11.30 h</b>		Departure for lunch: <b>11.30 h</b>	Departure for lunch: <b>11.30 h</b>	Departure for lunch: <b>11.30 h</b>
11.45								
12.00	<b>Lunch at Biohof Zug</b>	<b>Lunch at Biohof Zug</b>	<b>Lunch at Kommende Reiden</b>	<b>Lunch at Kommende Reiden</b>	<b>Lunch at Kommende Reiden</b>	<b>Lunch at Kommende Reiden</b>	<b>Lunch at Kommende Reiden</b>	<b>Lunch at Kommende Reiden</b>
12.15								
12.30								
12.45								
13.00								
13.15								
13.30								
13.45	Departure for afternoon visit: <b>13.45 h</b>	Departure for afternoon visit: <b>13.45 h</b>	Departure for afternoon visit: <b>13.30 h</b>	Departure for afternoon visit: <b>13.30 h</b>	Departure for afternoon visit: <b>13.30 h</b>	<b>Visit 5: Farmland market, voluntary property consolidation</b>	<b>Visit 8: Nature conservancy, ecological balance</b>	Departure for afternoon visit: <b>13.30 h</b>
14.00			<b>Visit 4: Spatial planning</b>	<b>Visit 3: Farm cooperation</b>	<b>Visit 6: Expropriation, water protection</b>			<b>Visit 7: Constructing outside building zone</b>
14.15	<b>Visit 2: Common land use</b>	<b>Visit 1: Inheritance law, farm transfer</b>						
14.30								
14.45	Expert on site: <b>Daniel von Euw</b>	Expert on site: <b>Martin Pfister</b>	Expert on site: <b>Meinrad Huser</b>	Expert on site: <b>Franziska Wirz- Meier</b>	Expert on site: <b>Beat Rööfli</b>	Expert on site: <b>Stephan Schneider</b>	Expert on site: <b>Franz Stadelmann</b>	Experts on site: <b>Lukas Walther, Fritz Birrer</b>
15.00								
15.15		<b>Guide = Translator</b>	<b>Guide = Translator</b>	<b>Guide = Translator</b> (nur für Betriebsleiter)			<b>Guide = Translator</b> (nur für Betriebsleiter)	<b>Guide = Translator</b>
15.30	<b>Guide = Translator</b>							
15.45		<b>Guide = Translator</b> (nur für Betriebsleiter)					(Visit starts with input at Kommende Reiden, departure to site later: ca. 14.45)	
16.00						(visit starts at Kommende Reiden)		
16.15								
16.30			Departure back to Campus Sursee: <b>16.30 h</b>	Departure back to Campus Sursee: <b>16.30 h</b>	Departure back to Campus Sursee: <b>16.30 h</b>	Departure back to Campus Sursee: <b>16.30 h</b>	Departure back to Campus Sursee: <b>16.30 h</b>	Departure back to Campus Sursee: <b>16.30 h</b>
16.45								
17.00	Departure back to Campus Sursee: <b>17.00 h</b>	Departure back to Campus Sursee: <b>17.00 h</b>	<i>Erholung, Vorbereitung auf Dinner</i>	<i>Erholung, Vorbereitung auf Dinner</i>	<i>Erholung, Vorbereitung auf Dinner</i>	<i>Erholung, Vorbereitung auf Dinner</i>	<i>Erholung, Vorbereitung auf Dinner</i>	<i>Erholung, Vorbereitung auf Dinner</i>
17.15								
17.30								
17.45								
18.00	<i>Regeneration, preparation for dinner</i>	<i>Regeneration, preparation for dinner</i>						
18.15								
18.30	Departure to dinner: <b>18.30 h</b> main entrance Campus Sursee							

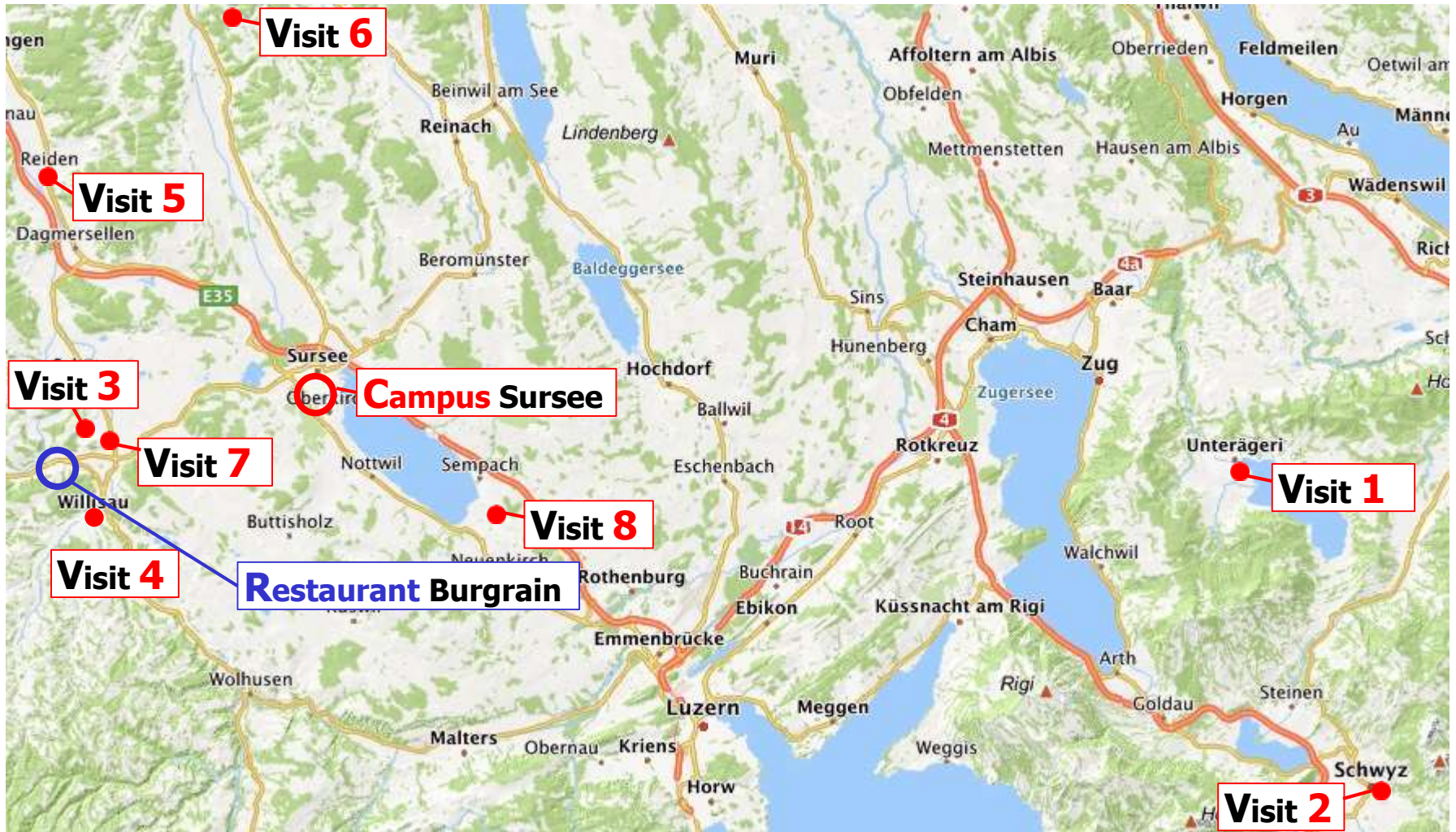


# Field Day „Swiss Land Governance“ - Orientation





# Field Day „Swiss Land Governance“ - Orientation





# Field Evening: "Apéro – Museum – Dinner"

- 18.30 Departure Main Entrance Campus
- 18.45 Apéro and, for those who are interested, a visit to the Agrar-Museum Burgrain
- 20.00 Dinner at the Restaurant Burgrain-Stube
- 22.00 Return to Campus Sursee



*Darf's es Betzali weniger sii?*



**Food Waste** Eine interaktive Ausstellung zur Vermeidung von Lebensmittelabfällen

- 23. Juni 2016 bis 21. Oktober 2017
- Mittwoch bis Samstag 14.00 bis 17.00 Uhr
- Sonn- und Feiertage 10.00 bis 17.00 Uhr
- Schweizerisches Agrarmuseum Burgrain, Burgrain 20, 6248 Alberswil
- [www.museumburgrain.ch](http://www.museumburgrain.ch)



Hauptpartner:



**Burgrain-Stube**  
restaurant